

Fishery Management Report No. 07-04

**Alaska Salmon Enhancement Program
2006 Annual Report**

by

Bruce White

March 2007

Alaska Department of Fish and Game

Divisions of Sport Fish and Commercial Fisheries



FISHERY MANAGEMENT REPORT NO. 07-04

**ALASKA SALMON ENHANCEMENT PROGRAM
2006 ANNUAL REPORT**

by

Bruce White,
Alaska Department of Fish and Game, Commercial Fisheries, Juneau

March 2007

Alaska Department of Fish and Game
Division of Sport Fish, Research and Technical Services
333 Raspberry Road, Anchorage, Alaska, 99518-1565

The Division of Sport Fish Fishery Management Reports series was established in 1989 for the publication of an overview of Division of Sport Fish management activities and goals in a specific geographic area. Since 2004, the Division of Commercial Fisheries has also used the Fishery Management Report series. Fishery Management Reports are intended for fishery and other technical professionals, as well as lay persons. Fishery Management Reports are available through the Alaska State Library and on the Internet: <http://www.sf.adfg.state.ak.us/statewide/divreports/html/intersearch.cfm>. This publication has undergone regional peer review.

*Bruce White,
Alaska Department of Fish and Game, Division of Commercial Fisheries,
Headquarters Office, 1255 West 8th Street, P.O. Box 25526, Juneau, Alaska, USA*

This document should be cited as:

White, B. 2007. Alaska salmon enhancement program 2006 annual report. Alaska Department of Fish and Game, Fishery Management Report No. 07-04, Anchorage.

The Alaska Department of Fish and Game (ADF&G) administers all programs and activities free from discrimination based on race, color, national origin, age, sex, religion, marital status, pregnancy, parenthood, or disability. The department administers all programs and activities in compliance with Title VI of the Civil Rights Act of 1964, Section 504 of the Rehabilitation Act of 1973, Title II of the Americans with Disabilities Act (ADA) of 1990, the Age Discrimination Act of 1975, and Title IX of the Education Amendments of 1972.

If you believe you have been discriminated against in any program, activity, or facility please write:

ADF&G ADA Coordinator, P.O. Box 115526, Juneau AK 99811-5526

U.S. Fish and Wildlife Service, 4040 N. Fairfax Drive, Suite 300 Webb, Arlington VA 22203

Office of Equal Opportunity, U.S. Department of the Interior, Washington DC 20240

The department's ADA Coordinator can be reached via phone at the following numbers:

(VOICE) 907-465-6077, (Statewide Telecommunication Device for the Deaf) 1-800-478-3648, (Juneau TDD)

907-465-3646, or (FAX) 907-465-6078

For information on alternative formats and questions on this publication, please contact:

ADF&G, Sport Fish Division, Research and Technical Services, 333 Raspberry Road, Anchorage AK 99518 (907)267-2375

TABLE OF CONTENTS

| | Page |
|-------------------------|-------------|
| LIST OF TABLES..... | ii |
| LIST OF FIGURES..... | iii |
| ABSTRACT | 1 |
| INTRODUCTION..... | 1 |
| HIGHLIGHTS IN 2006..... | 1 |
| FIGURES AND TABLES..... | 3 |

LIST OF TABLES

| Table | Page |
|--------------------------------------------------------------------------------------------------------------------------------------------------------------|-------------|
| 1. List of acronyms and abbreviations used throughout this report..... | 7 |
| 2. Estimated egg takes from Alaska hatcheries, in millions, 2006..... | 8 |
| 3. Estimated releases from Alaska hatcheries, in millions, 2006..... | 8 |
| 4. Total returns attributed to Alaska hatcheries and enhancement projects in 2006, including common property, cost recovery, broodstock, and escapement..... | 8 |
| 5. Alaska common property commercial harvest of enhanced fish, in thousands, 2006..... | 9 |
| 6. Preliminary estimated value of the total Alaska common property commercial harvest, in thousands of dollars, 2006..... | 10 |
| 7. Salmon fishery enhancement program timeline of events..... | 11 |
| 8. Eggs taken at Alaska hatcheries in 2006, in millions of eggs (transferred eggs are listed with the receiving hatchery)..... | 14 |
| 9. Alaskan hatchery releases in 2006, in millions of fish..... | 15 |
| 10. Estimated adult returns by species to Alaska enhancement projects in 2006, including common property harvests, as reported by operators..... | 17 |
| 11. Projected adult returns, by species, to Alaska enhancement projects in 2006..... | 18 |
| 12. Cumulative state loans made to PNP salmon hatchery corporations and enhancement funds returned to associations..... | 19 |
| 13. Summary of anadromous salmon production (all species) from Alaska hatcheries and enhancement projects..... | 20 |
| 14. Summary of pink salmon production from Alaska hatcheries and enhancement projects..... | 20 |
| 15. Summary of chum salmon production from Alaska hatcheries and enhancement projects..... | 21 |
| 16. Summary of coho salmon production from Alaska hatcheries and enhancement projects..... | 21 |
| 17. Summary of Chinook salmon production from Alaska hatcheries and enhancement projects..... | 22 |
| 18. Summary of sockeye salmon production from Alaska hatcheries and enhancement projects..... | 22 |
| 19. Summary of statewide salmon production from private nonprofit hatcheries in Alaska, as reported by operators..... | 23 |
| 20. Summary of pink salmon production from private nonprofit hatcheries in Alaska, as reported by operators..... | 24 |
| 21. Summary of chum salmon production from private nonprofit hatcheries in Alaska, as reported by operators..... | 25 |
| 22. Summary of coho salmon production from private nonprofit hatcheries in Alaska, as reported by operators..... | 26 |
| 23. Summary of Chinook salmon production from private nonprofit hatcheries in Alaska, as reported by operators..... | 27 |
| 24. Summary of sockeye salmon production from private nonprofit hatcheries in Alaska, as reported by operators..... | 28 |
| 25. Alaska commercial salmon fishery harvest average weights and prices..... | 29 |
| 26. Alaska state hatchery FY 2006 operating budgets, in thousands of dollars..... | 29 |
| 27. Estimated pink salmon returns to Alaska hatcheries in 2006, including common property harvests, as reported by operators..... | 30 |
| 28. Estimated chum salmon returns to Alaska hatcheries in 2006, including common property harvests, as reported by operators..... | 31 |
| 29. Estimated coho salmon returns to Alaska hatcheries in 2006, including common property harvests, as reported by operators..... | 32 |
| 30. Estimated Chinook salmon returns to Alaska hatcheries in 2006, including common property harvests, as reported by operators..... | 33 |
| 31. Estimated sockeye salmon returns to Alaska hatcheries in 2006, including common property harvests, as reported by operators..... | 34 |
| 32. Estimated “other” enhanced returns to Alaska hatcheries in 2006, including common property harvests, as reported by operators..... | 35 |
| 33. Summary of salmon production in 2006 from Fish Resource Permits issued by the Alaska Department of Fish and Game..... | 36 |

LIST OF TABLES (Continued)

| Table | Page |
|-------------------------------------------------------------------------------------------------------------------------------------|-------------|
| 34. Updated pink salmon returns to Alaska hatcheries in 2005, including common property harvest, as reported by operators..... | 39 |
| 35. Updated chum salmon returns to Alaska hatcheries in 2005, including common property harvests, as reported by operators..... | 40 |
| 36. Updated coho salmon returns to Alaska hatcheries in 2005, including common property harvests, as reported by operators..... | 41 |
| 37. Updated Chinook salmon returns to Alaska hatcheries in 2005, including common property harvests, as reported by operators. | 42 |
| 38. Updated Sockeye salmon returns to Alaska hatcheries in 2005, including common property harvests, as reported by operators..... | 43 |
| 39. Updated “other” enhanced fish returns to Alaska hatcheries in 2005, as reported by operators. | 44 |
| 40. Actively operated Alaska hatcheries. | 45 |
| 41. Permitted capacity of Alaskan private nonprofit hatcheries in 2006, in millions of eggs. | 47 |

LIST OF FIGURES

| Figure | Page |
|-------------------------------------------------------------------------------------------|-------------|
| 1. Total egg-takes and releases in the Alaska salmon hatchery program, 1977 to 2006. | 4 |
| 2. Total returns in the Alaska salmon hatchery program, 1977 to 2006. | 4 |
| 3. Alaska salmon hatchery returns by species in 2006. | 5 |
| 4. Locations of hatcheries in Alaska..... | 6 |

ABSTRACT

The Alaska Department of Fish and Game oversees and regulates all state and private sector salmon rehabilitation and enhancement projects. Protection of Alaska's natural salmon stocks requires stringent permitting processes. Geneticists, pathologists, and biologists review all projects prior to the issuance of a permit to operate a salmon ranching facility, transfer eggs or fish, or release any fish into Alaska waters. Pathology, genetic, coded wire tag, and otolith processing laboratories are maintained to provide both diagnostic information to Alaska Department of Fish and Game fishery managers, and inseason and technical expertise to the private sector.

Over 1.8 billion salmon eggs were collected by Alaskan hatchery operators in 2006. In addition, over 1.4 billion fish were released. An estimated 48 million salmon of hatchery origin returned. Of the 123 million salmon harvested in the commercial common property fishery, over 24 million or 20% of the harvest was contributed from ocean ranching by the Alaska salmon enhancement program. Enhanced salmon provided over \$59 million or 21% of the preliminary value of the commercial common property harvest. The ocean ranching program provides hundreds of Alaskans with seasonal and fulltime jobs. It is considered the largest agricultural industry in Alaska.

Key words: Alaska salmon enhancement program, salmon hatchery, annual report, ocean ranching, private non-profit corporation, Southeast Alaska, Prince William Sound, Cook Inlet, Kodiak, egg take, cost recovery, Chinook, pink, chum, coho, sockeye

INTRODUCTION

Prince William Sound and Southeast Alaska are the predominant regions involved with salmon enhancement programs and pink and chum salmon are the predominant species produced. Production levels, in terms of egg takes and releases, have largely stabilized (Figure 1); programs have matured and are generally operating at planned capacities.

The salmon enhancement program is composed of several factions:

- 30 private nonprofit (PNP) corporation hatcheries,
- 2 federal or Bureau of Indian Affairs (BIA) hatcheries,
- 2 Alaska state hatcheries, and
- Several streamside incubation and restoration projects.

The Alaska Department of Fish and Game (ADF&G) Division of Sport Fish operates the state hatcheries, primarily to produce salmonid species intended for sport fisheries. PNP corporations are permitted to operate salmon hatcheries and recoup their operational costs from a special harvest of returning adult fish, called a cost recovery harvest. All other returning adult fish are available for harvest in Alaska's common property fisheries open to the public. Federal hatcheries are generally used for research. Streamside incubation projects enhance stocks of fish inexpensively. Stream restoration projects involve restoring streams degraded by human activity.

HIGHLIGHTS IN 2006

- The preliminary statewide salmon harvest in 2006 was 142 million fish with an estimated ex-vessel value of over \$309 million. Across the state, the total return to Alaska hatcheries was nearly 48 million salmon. The preliminary ex-vessel value of enhanced salmon to the commercial common property fishery was over \$59 million. Compared to 2005, the preliminary exvessel price paid for sockeye, Chinook, coho, and chum salmon increased, while the price paid for pink salmon remained about the same.
- In 2006, the preliminary exvessel value of the statewide commercial salmon harvest declined by about 8% compared to the record salmon harvest in 2005. This decrease was largely due

to the decline in the number of pink salmon harvested. The total enhanced chum return (16 million) was the third highest on record and the total enhanced sockeye return (4 million) was the second highest on record.

- Enhanced salmon accounted for approximately 21% of the total exvessel value of the statewide commercial common property harvest. Statewide, enhanced salmon accounted for 71%, 24%, 22%, 11%, and 8% of the exvessel value of the chum, pink, coho, sockeye, and Chinook salmon in the commercial common property harvest, respectively.
- Statewide, 57% of the chum, 20% of the pink, 20% of the coho, 7% of the Chinook and 6% of the sockeye salmon harvested in the commercial common property fisheries were of hatchery origin.
- In Southeast, enhanced salmon accounted for 36% of the fish harvested in the commercial common property salmon fishery. Enhanced salmon contributed an estimated \$31 million or 41% of the total harvest value. An estimated 7.8 million enhanced chum salmon were harvested in the commercial common property fishery and had a preliminary exvessel value of \$24 million. Hatchery-origin coho, Chinook, and sockeye salmon harvested in the commercial common property fishery had an estimated value of \$3 and \$2 million, \$1.5 million, respectively.
- In Prince William Sound, 73% of the salmon in the total commercial common property harvest were enhanced fish. Hatcheries contributed 80% of the pinks, 75% of the chums 49% of the coho, and 38% of the sockeye harvested in the commercial common property fishery. Combined, these hatcheries provided over \$19 million or 48% of the value of the commercial common property harvest. Hatchery produced sockeye, pink, chum, and coho salmon contributed about \$7.9, \$5.7, \$3.3, and \$2.2 million to the commercial common property harvest, respectively.
- In Cook Inlet, 30% of the salmon harvested in the commercial common property fisheries were enhanced fish. Enhanced salmon contributed approximately \$6.5 million or 44% of the total value of salmon in the commercial common property harvest. Approximately 55% of the sockeye salmon harvested in the commercial common property fishery were of hatchery origin.
- In Kodiak, 7% of the salmon harvested in the commercial common property harvest were enhanced fish. Enhanced salmon contributed approximately \$2.5 million, or 10% of the value of salmon in the commercial common property harvest. Enhanced coho, chum, sockeye, and pink salmon accounted for approximately 28%, 16%, 7% and 6%, of the commercial common property salmon harvest, respectively.
- Statewide, an estimated 276,966 hatchery-produced fish representing 9 species (Chinook, coho, pink, chum, and sockeye salmon; steelhead, rainbow trout, arctic char and grayling) were harvested by sport anglers.
- Over 61 million fish are projected to return to Alaska hatcheries in 2007.

FIGURES AND TABLES

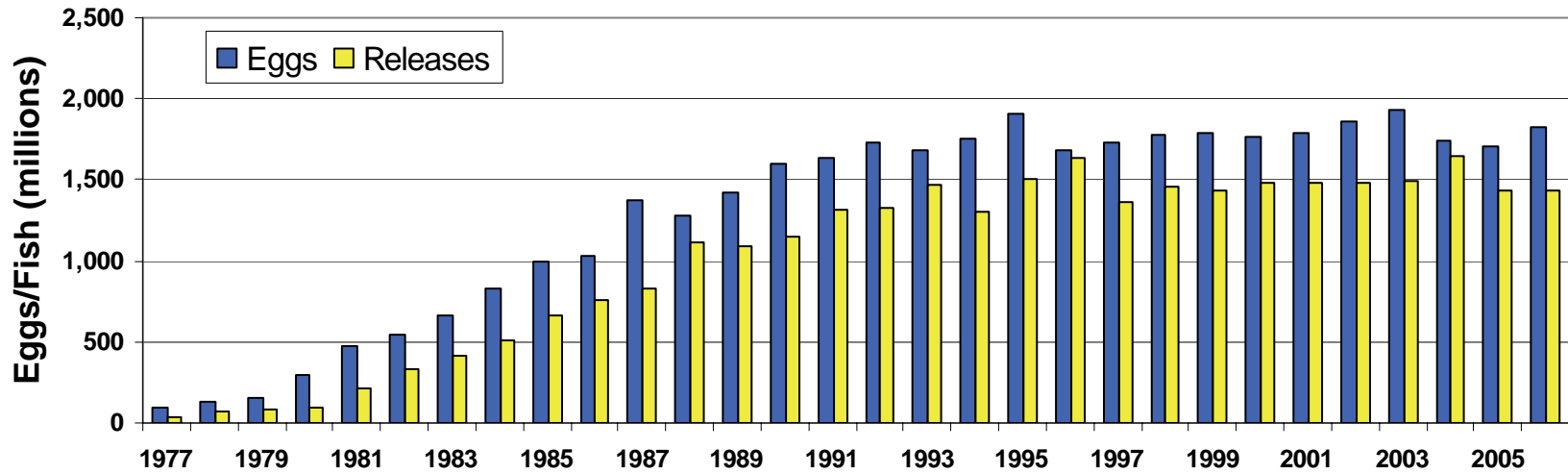


Figure 1.—Total egg-takes and releases in the Alaska salmon hatchery program, 1977 to 2006.

4

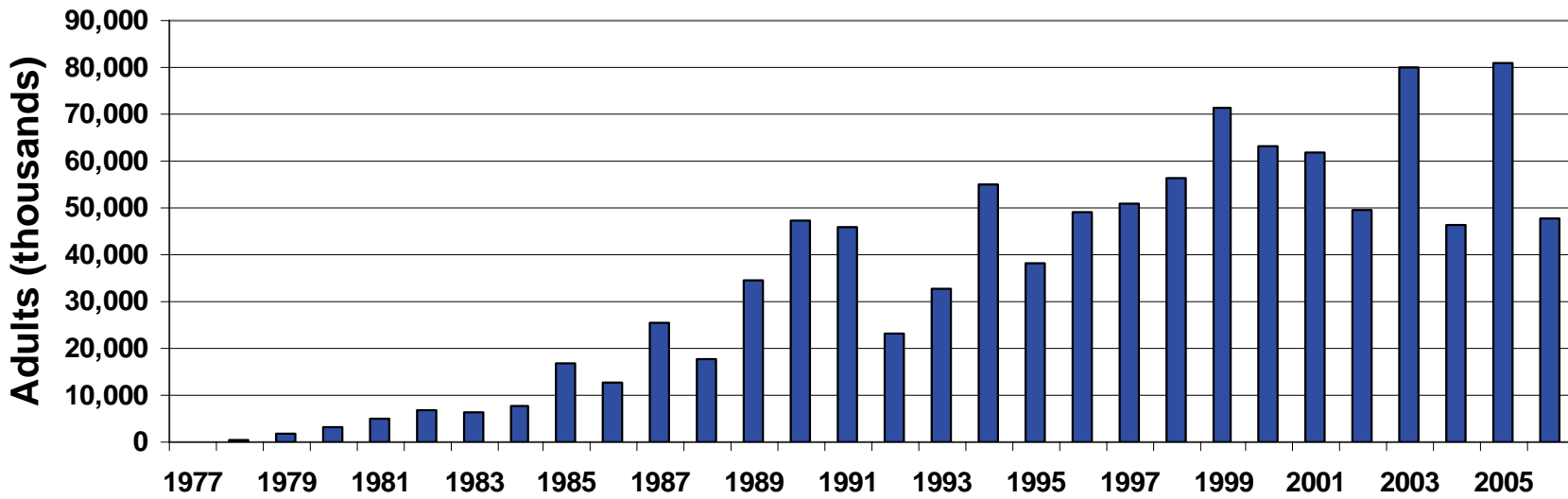


Figure 2.—Total returns in the Alaska salmon hatchery program, 1977 to 2006.

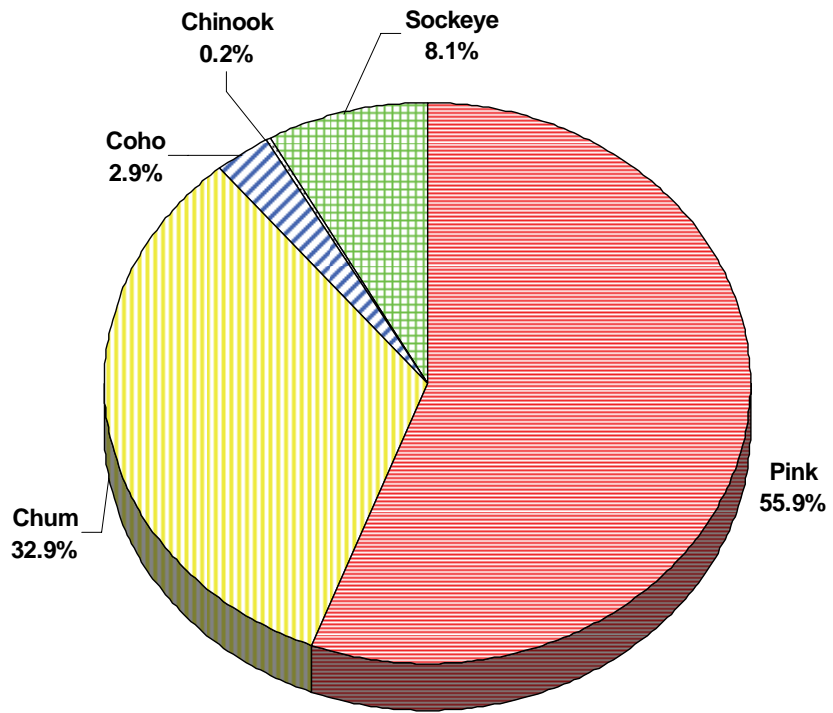


Figure 3.—Alaska salmon hatchery returns by species in 2006.

Table 1.–List of acronyms and abbreviations used throughout this report.

| Acronym | Organization |
|---------|----------------------------------------------------------------|
| AAC | American Aquaculture Corporation |
| AAI | Alaska Aquaculture, Inc. |
| ADF&G | Alaska Department of Fish and Game |
| AKI | Armstrong-Keta, Inc. |
| AYK | Arctic-Yukon-Kuskokwim |
| BCF | Burro Creek Farms, Inc. |
| CIAA | Cook Inlet Aquaculture Association |
| COOP | Cooperative projects between state and PNP operators |
| DCED | Department of Commerce and Economic Development |
| DIPAC | Douglas Island Pink and Chum, Inc. |
| DMTH | Deer Mountain Tribal Hatchery |
| FRED | Fisheries Rehabilitation, Enhancement and Development Division |
| KNFC | Kake Nonprofit Fisheries Corporation |
| KRAA | Kodiak Regional Aquaculture Association |
| MCAA | Meyers Chuck Aquaculture Association |
| MIC | Metlakatla Indian Community |
| NMFS | National Marine Fisheries Service |
| NSRAA | Northern Southeast Regional Aquaculture Association |
| PGHC | Port Graham Hatchery Corporation |
| PNP | Private nonprofit |
| POWHA | Prince of Wales Hatchery Association |
| PWSAC | Prince William Sound Aquaculture Corporation |
| SJC | Sheldon Jackson College |
| SSRAA | Southern Southeast Regional Aquaculture Association |
| VFDA | Valdez Fisheries Development Association |

Table 2.—Estimated egg takes from Alaska hatcheries, in millions, 2006.

| Area | Pink | Chum | Coho | Chinook | Sockeye | Other | Total |
|-------------------------|--------|--------|-------|---------|---------|-------|----------|
| Southeast | 87.45 | 516.54 | 24.19 | 13.93 | 21.97 | 0.10 | 664.19 |
| Prince William Sound | 673.78 | 169.74 | 6.10 | 0.00 | 46.31 | 0.00 | 895.93 |
| Cook Inlet | 20.55 | 0.00 | 2.88 | 2.21 | 18.21 | 2.02 | 45.87 |
| Kodiak/Alaska Peninsula | 181.81 | 29.21 | 2.38 | 0.35 | 6.07 | 0.00 | 219.82 |
| Totals ^a | 963.60 | 715.49 | 35.55 | 16.49 | 92.57 | 2.11 | 1,825.80 |

^a Some figures may not total exactly due to rounding.

Table 3.—Estimated releases from Alaska hatcheries, in millions, 2006.

| Area | Pink | Chum | Coho | Chinook | Sockeye | Other | Total |
|-------------------------|--------|--------|-------|---------|---------|-------|----------|
| Southeast | 79.61 | 375.79 | 15.50 | 8.53 | 13.05 | 0.02 | 492.51 |
| Prince William Sound | 599.49 | 146.02 | 2.56 | 0.00 | 28.65 | 0.00 | 776.72 |
| Cook Inlet | 13.86 | 0.00 | 2.38 | 1.80 | 6.28 | 1.12 | 25.46 |
| Kodiak/Alaska Peninsula | 115.66 | 17.57 | 1.42 | 0.03 | 4.85 | 0.00 | 139.54 |
| Totals ^a | 808.63 | 539.37 | 21.87 | 10.37 | 52.84 | 1.14 | 1,434.22 |

^a Some figures may not total exactly due to rounding.

Table 4.—Total returns attributed to Alaska hatcheries and enhancement projects in 2006, including common property, cost recovery, broodstock, and escapement.

| Area | Pink | Chum | Coho | Chinook | Sockeye | Other | Total |
|-------------------------|------------|------------|-----------|---------|-----------|---------|------------|
| Southeast | 675,867 | 13,272,193 | 650,687 | 87,485 | 544,128 | 666 | 15,231,026 |
| Prince William Sound | 21,250,089 | 2,230,319 | 472,510 | 2,075 | 1,308,816 | 0 | 25,263,809 |
| Cook Inlet | 284,522 | 0 | 78,325 | 19,691 | 1,912,880 | 102,960 | 2,398,378 |
| Kodiak/Alaska Peninsula | 4,491,048 | 212,526 | 176,604 | 400 | 119,473 | 0 | 5,000,051 |
| Totals ^a | 26,701,526 | 15,715,038 | 1,378,126 | 109,651 | 3,885,297 | 103,626 | 47,893,264 |

^a Some figures may not total exactly due to rounding.

Table 5.– Alaska common property commercial harvest of enhanced fish, in thousands, 2006.

| Area | Harvest ^a | Chinook | Sockeye | Coho | Pink | Chum | Total |
|-------------------------------------------|---------------------------------------------|---------|---------|-------|--------|--------|---------|
| Southeast | Total Commercial Harvest | 355 | 1,330 | 2,054 | 11,650 | 13,931 | 29,320 |
| | Total Cost Recovery Harvest | 16 | 128 | 247 | 229 | 4,632 | 5,253 |
| | Common Property Harvest | 339 | 1,202 | 1,807 | 11,421 | 9,299 | 24,067 |
| | Enhanced Fish Harvested | 41 | 248 | 318 | 299 | 7,777 | 8,682 |
| | % Enhanced in Total CP Harvest ^b | 12.1% | 20.6% | 17.6% | 2.6% | 83.6% | 36.1% |
| Prince William Sound | Total Commercial Harvest | 31 | 2,524 | 677 | 22,296 | 2,428 | 27,956 |
| | Total Cost Recovery Harvest | 0 | 351 | 16 | 9,825 | 835 | 11,027 |
| | Common Property Harvest | 31 | 2,173 | 661 | 12,471 | 1,593 | 16,929 |
| | Enhanced Fish Harvested | 0 | 832 | 324 | 10,010 | 1,199 | 12,366 |
| | % Enhanced in Total CP Harvest ^b | 0.0% | 38.3% | 49.1% | 80.3% | 75.3% | 73.0% |
| Cook Inlet | Total Commercial Harvest | 20 | 2,438 | 207 | 1,864 | 137 | 4,666 |
| | Total Cost Recovery Harvest | 0 | 80 | 2 | 247 | 0 | 328 |
| | Common Property Harvest | 20 | 2,358 | 205 | 1,617 | 137 | 4,338 |
| | Enhanced Fish Harvested | 1 | 1,288 | 0 | 5 | 0 | 1,294 |
| | % Enhanced in Total CP Harvest ^b | 3.1% | 54.6% | 0.0% | 0.3% | 0.0% | 29.8% |
| Kodiak | Total Commercial Harvest | 20 | 1,584 | 553 | 31,693 | 1,081 | 34,931 |
| | Total Cost Recovery Harvest | 0 | 1 | 16 | 2,318 | 1 | 2,337 |
| | Common Property Harvest | 20 | 1,583 | 537 | 29,375 | 1,080 | 32,594 |
| | Enhanced Fish Harvested | 0 | 114 | 152 | 1,840 | 176 | 2,282 |
| | % Enhanced in Total CP Harvest ^b | 0.0% | 7.2% | 28.3% | 6.3% | 16.3% | 7.0% |
| Chignik/Aleutian Islands/Alaska Peninsula | Total Commercial Harvest | 15 | 5,109 | 299 | 5,701 | 1,371 | 12,495 |
| | Enhanced Fish Harvested | 0 | 0 | 0 | 0 | 0 | 0 |
| | % Enhanced in Total CP Harvest ^b | 0.0% | 0.0% | 0.0% | 0.0% | 0.0% | 0.0% |
| Bristol Bay | Total Commercial Harvest | 106 | 28,726 | 53 | 143 | 2,000 | 31,028 |
| | Enhanced Fish Harvested | 0 | 0 | 0 | 0 | 0 | 0 |
| | % Enhanced in Total CP Harvest ^b | 0.0% | 0.0% | 0.0% | 0.0% | 0.0% | 0.0% |
| Arctic-Yukon-Kuskokwim | Total Commercial Harvest | 71 | 149 | 421 | 1 | 510 | 1,152 |
| | Enhanced Fish Harvested | 0 | 0 | 0 | 0 | 0 | 0 |
| | % Enhanced in Total CP Harvest ^b | 0.0% | 0.0% | 0.0% | 0.0% | 0.0% | 0.0% |
| Total | Total Commercial Harvest | 618 | 41,860 | 4,264 | 73,348 | 21,458 | 141,548 |
| | Total Cost Recovery Harvest | 16 | 559 | 281 | 12,620 | 5,469 | 18,945 |
| | Common Property Harvest | 602 | 41,301 | 3,983 | 60,728 | 15,989 | 122,603 |
| | Enhanced Fish Harvested | 42 | 2,482 | 794 | 12,154 | 9,152 | 24,624 |
| | % Enhanced in Total CP Harvest ^b | 6.9% | 6.0% | 19.9% | 20.0% | 57.2% | 20.1% |

^a Total commercial harvest includes fish caught by all commercial gear types, which includes cost recovery harvested fish.

^b CP = common property.

Table 6.—Preliminary estimated value of the total Alaska common property commercial harvest, in thousands of dollars, 2006.

| Area | Chinook | Sockeye | Coho | Pink | Chum | Total |
|-------------------------------------------|----------|-----------|----------|----------|----------|-----------|
| Southeast | \$17,272 | \$7,432 | \$17,400 | \$5,509 | \$29,031 | \$76,643 |
| Prince William Sound | \$3,249 | \$20,584 | \$4,427 | \$7,103 | \$4,379 | \$39,742 |
| Cook Inlet | \$575 | \$11,862 | \$1,196 | \$782 | \$273 | \$14,689 |
| Kodiak | \$196 | \$6,135 | \$2,802 | \$13,043 | \$2,452 | \$24,627 |
| Chignik/Aleutian Islands/Alaska Peninsula | \$148 | \$16,141 | \$587 | \$1,754 | \$1,455 | \$20,085 |
| Bristol Bay | \$1,366 | \$90,986 | \$163 | \$30 | \$1,370 | \$93,915 |
| Arctic-Yukon-Kuskokwim | \$3,808 | \$456 | \$934 | \$1 | \$573 | \$5,771 |
| Totals ^a | \$26,614 | \$153,596 | \$27,510 | \$28,221 | \$39,533 | \$275,473 |

^a Data from the Alaska Department of Fish and Game website: <http://www.state.ak.us/adfg/geninfo/salmon/salmhome.htm>. Accessed 1/30/2007. Preliminary figures may not total exactly due to rounding.

Table 7.—Salmon fishery enhancement program timeline of events.

| Year | Event | No. of state hatcheries | No. private nonprofit (PNP) hatcheries | No. of Federal hatcheries |
|------|----------------------------------------------------------------------------------------------------------------------------------------------------------------------------------------------------------|-------------------------|----------------------------------------|---------------------------|
| 1934 | Federal research station Little Port Walter constructed | | | 1 |
| 1950 | Federal hatchery at Auke Creek constructed | | | 2 |
| 1953 | 1 territorial hatchery constructed at Kitoi Bay | 1 | | |
| 1954 | 1 territorial hatchery constructed at Deer Mountain | 2 | | |
| 1958 | 1 territorial hatchery constructed at Ft. Richardson | 3 | | |
| 1965 | 1 state hatchery constructed at Fire Lake | 4 | | |
| 1969 | 1 state hatchery constructed at Crystal Lake | 5 | | |
| 1971 | Fisheries Rehabilitation, Enhancement and Development (FRED) Division created by Legislature | | | |
| 1973 | 2 state hatcheries constructed (Crooked Creek and Gulkana) State enhancement projects at Starrigavan and Halibut Cove started | 7 | | |
| 1974 | 2 state hatcheries constructed (Beaver Falls and East Creek) Legislature authorizes permits for private nonprofit hatchery operators to salmon ranch | 9 | | |
| 1975 | 4 PNP permits issued [Sheldon Jackson (#3), Port San Juan (#2), Perry Island (#1), and Sandy Bay (#4)] 2 state hatcheries constructed (Big Lake and Tutka) | 11 | 4 | |
| 1976 | AS 16.10.375 passed, designating regions for regional planning teams and enhancing salmon 1 state hatchery constructed at Elmendorf 2 PNP permits issued [Burnett Inlet (#5) and Kowee Creek (#6)] | 12 | 6 | |
| 1977 | 1 PNP permit issued to Gunnuk Creek (#7) 2 state hatcheries constructed (Klawock and Russell Creek) State enhancement project at Karluk Lake started | 14 | 7 | |
| 1978 | 1 PNP permit issued to Whitman Lake (#8) 2 state hatcheries constructed (Cannery Creek and Hidden Falls) | 16 | 8 | |
| 1979 | 3 PNP permits issued [Sheep Creek (#11), Meyers Chuck (#10), Salmon Creek (#9)] 1 state hatchery constructed (Snettisham) 1 state hatchery closed (Fire Lake) | 17 16 | 11 | |
| 1980 | 1 PNP permit issued to Burro Creek (#12) 2 state hatcheries constructed (Clear and Main Bay) 1 hatchery at Tamgas Creek constructed (Metlakatla Indian Community/BIA) | 18 | 12 | |
| 1981 | 1 state hatchery closed (East Creek) | 17 | | 3 |

-continued-

Table 7.—Page 2 of 3.

| Year | Event | No. of state hatcheries | No. private nonprofit (PNP) hatcheries | No. of Federal hatcheries |
|------|------------------------------------------------------------------------------------------------------------------------------------------------------------------------------|-------------------------|----------------------------------------|---------------------------|
| | 2 state hatcheries constructed (Sikusuilag and Trail Lakes) | 19 | | |
| | 4 PNP permits issued [Medvejie (#16), Port Armstrong (#13), Solomon Gulch (#15), Salmon Creek (#14)] | | 16 | |
| | 1 PNP permit revoked [Salmon Creek (#9)] | | 15 | |
| 1982 | 2 PNP permits issued [Eklutna (#17) and Favorite Bay (#18)] | | 17 | |
| 1983 | 3 PNP permits issued [Neets Bay (#19), Crittenden Creek (#22), and Esther (#20)] | | 20 | |
| | 1 state hatchery completed (Broodstock Development Center) | 20 | | |
| 1984 | 1 PNP permit issued to Santa Anna (#21) | | 21 | |
| 1985 | 1 PNP permit issued to Port Camden (#23) | | 22 | |
| 1986 | 1 PNP permit issued to Beaver Falls (#24) | | 23 | |
| 1987 | 1 PNP permit issued to Gastineau (#25) | | 24 | |
| 1988 | Aquatic Farm Act signed; statute passes allowing contracting of hatchery operations | | | |
| | 4 state hatcheries contracted to private sector (Kitoi Bay, Trail Lakes, Cannery Creek, Hidden Falls) | 16 | | |
| | 4 PNP permits issued [Hidden Falls (#28), Cannery Creek (#26), Trail Lakes (#27), Kitoi Bay (#29)] | | 28 | |
| | 1 state hatchery constructed (Pillar Creek) | 17 | | |
| | 2 PNP permits revoked [Sandy Bay (#4) and Salmon Creek (#14)] | | 26 | |
| 1990 | CSHB432 becomes law prohibiting finfish farming in Alaska | | | |
| | 1 PNP permit issued to Bell Island (#30) | | 27 | |
| 1991 | 5 state hatcheries contracted to private sector [Main Bay (#31), Tutka, Gulkana (#39), Pillar Creek (#38), and Beaver Falls(#24)] — Beaver Falls and Tutka tallied elsewhere | 12 | 30 | |
| | Portions of 6 state hatcheries paid for by private or federal funds | | | |
| 1992 | 1 state hatchery closed (Russell Creek) | 11 | | |
| | 2 PNP permits issued [Haines projects (#34) and Port Graham (#33)] | | 32 | |
| | 1 PNP permit revoked [Meyers Chuck (#10)] | | 31 | |
| | FRED Division merged with the Commercial Fisheries Division to form the Commercial Fisheries Management and Development (CFMD) Division | | | 3 |
| 1993 | 3 state hatcheries transferred from CFMD to Sport Fish Division (Broodstock Development Center, Elmendorf, and Ft. Richardson) | | | |

-continued-

Table 7.—Page 3 of 3.

| Year | Event | No. of state hatcheries | No. private nonprofit (PNP) hatcheries | No. of Federal hatcheries |
|------|---------------------------------------------------------------------------------------------|-------------------------|----------------------------------------|---------------------------|
| | 2 state hatcheries contracted to private sector (Crooked Creek and Klawock) | 9 | | |
| | 1 state hatchery closed (Big Lake) | 8 | | 3 |
| 1994 | 4 PNP permits issued [Tutka (#32), Crooked Creek (#35), Klawock (#36), Deer Mountain (#37)] | | 35 | |
| | 1 state hatchery contracted (Deer Mountain) | 7 | | |
| | Ft. Richardson Hatchery merged with Broodstock Development Center | 6 | | |
| 1995 | 1 PNP hatchery under new management [Klawock (#38)] | | | |
| | 1 state hatchery transferred from CFMD Division to Sport Fish Division (Crystal Lake) | | | |
| | 1 state hatchery closed (Sikusuilag) | 5 | | |
| 1996 | 1 state hatchery contracted [Snettisham (#39)] | 4 | 36 | |
| | 1 state hatchery transferred from CFMD Division to Sport Fish Division (Clear) | | | |
| | 3 PNP permits revoked [Crittenden Creek (#22), Santa Anna (#21), and Favorite Bay (#18)] | | 33 | |
| 1997 | 1 state hatchery closed (Clear) | 3 | | |
| | 2 state contracted (PNP) hatcheries closed [Beaver Falls (#24), Crooked Creek (#35)] | | 31 | |
| | 1 PNP hatchery closed & reopened under new management [Burnett Inlet (#5, now #40)] | | 31 | |
| 1998 | 1 PNP hatchery closed [Eklutna (#17)] | | 30 | |
| 2000 | 1 state hatchery contracted to private sector (Crystal Lake Hatchery) | 2 | 31 | |
| | Port Camden hatchery permit (# 23) given up | | 30 | 3 |
| 2001 | Kowee Creek hatchery permit (#6) given up; 1 Federal hatchery inactivated (Auke Creek) | 2 | 29 | 2 |
| 2002 | No activity | 2 | 29 | 2 |
| 2003 | No activity | 2 | 29 | 2 |
| 2004 | 1 PNP hatchery permit issued [Port St. Nicholas (#43)] | 2 | 30 | 2 |
| 2005 | No activity | 2 | 30 | 2 |
| 2006 | No activity | 2 | 30 ^a | 2 |

^aPerry Island, Bell Island, and Burro Creek are not active.

Table 8.—Eggs taken at Alaska hatcheries in 2006, in millions of eggs (transferred eggs are listed with the receiving hatchery).

| Area/Operator/Location | | Pink | Chum | Coho | Chinook | Sockeye | Other | Total |
|-------------------------------|------------------------------------------|--------|--------|-------|---------|---------|-------|----------|
| Southeast | | | | | | | | |
| SSRAA | Whitman Lake | | 39.82 | 2.31 | 1.17 | | | 43.30 |
| | Neets Bay | | 111.33 | 2.34 | | | | 113.66 |
| | Burnett Inlet | | | 1.99 | | 0.12 | | 2.10 |
| | Crystal Lake | | | 0.23 | 2.11 | | | 2.34 |
| NSRAA | Hidden Falls | | 95.65 | 5.18 | 1.58 | | | 102.40 |
| | Medvejie Creek | 0.66 | 56.89 | 0.23 | 4.96 | | | 62.75 |
| | Haines projects | | 3.77 | | | | | 3.77 |
| AKI | Port Armstrong | 85.62 | 19.29 | 3.01 | 1.35 | | | 109.27 |
| DIPAC | Macaulay ^a | | 123.14 | 0.90 | 0.78 | | | 124.82 |
| | Snettisham | | | | | 21.70 | | 21.70 |
| KTHC | Deer Mountain | | | 0.12 | 0.15 | | 0.01 | 0.27 |
| KNFC | Gunnuk Creek | | 45.88 | 0.03 | | | | 45.91 |
| POWHA | Klawock | | | 5.04 | | | 0.01 | 5.05 |
| | Port Saint Nicholas | | | | 0.62 | | | 0.62 |
| SJC | Sheldon Jackson | 1.17 | 10.55 | 0.24 | 0.07 | | | 12.03 |
| MIC | Tamgas Creek | | 10.23 | 2.58 | 0.35 | 0.16 | | 13.32 |
| NMFS | Little Port Walter | | | | 0.79 | | 0.08 | 0.87 |
| | Southeast Totals ^b | 87.45 | 516.54 | 24.19 | 13.93 | 21.97 | 0.10 | 664.19 |
| Prince William Sound | | | | | | | | |
| PWSAC | Armin F. Koernig | 195.05 | | | | | | 195.05 |
| | Wally Noerenberg | 91.77 | 169.74 | 3.81 | | | | 265.32 |
| | Cannery Creek | 151.88 | | | | | | 151.88 |
| | Main Bay | | | | | 10.10 | | 10.10 |
| | Gulkana | | | | | 36.21 | | 36.21 |
| VFDA | Solomon Gulch | 235.08 | | 2.29 | | | | 237.38 |
| | Prince William Sound Totals ^b | 673.78 | 169.74 | 6.10 | 0.00 | 46.31 | 0.00 | 895.93 |
| Cook Inlet | | | | | | | | |
| PGHC | Port Graham | 20.55 | | | | | | 20.55 |
| CIAA | Trail Lakes | | | 1.08 | | 18.21 | | 19.29 |
| ADF&G | Ship Creek Complex | | | 1.79 | 2.21 | | 2.02 | 6.02 |
| | Cook Inlet Totals ^b | 20.55 | 0.00 | 2.88 | 2.21 | 18.21 | 2.02 | 45.87 |
| Kodiak | | | | | | | | |
| KRAA | Kitoi Bay | 181.81 | 29.21 | 2.29 | | 0.72 | | 214.02 |
| | Pillar Creek | | | 0.09 | 0.35 | 5.35 | | 5.79 |
| | Kodiak Totals ^b | 181.81 | 29.21 | 2.38 | 0.35 | 6.07 | 0.00 | 219.82 |
| Statewide Totals ^b | | 963.60 | 715.49 | 35.55 | 16.49 | 92.57 | 2.11 | 1,825.80 |

^a Burro Creek and Sheep Creek egg takes are listed under Macaulay Hatchery.

^b Some figures may not total exactly due to rounding.

Table 9.—Alaskan hatchery releases in 2006, in millions of fish.

| Area/Operator/Location | | Pink | Chum | Coho | Chinook | Sockeye | Other | Total | |
|-------------------------------|-------------------------|----------------------|--------|-------|---------|---------|-------|--------|-------|
| Southeast ^a | | | | | | | | | |
| SSRAA | Whitman Lake | | | 0.31 | 0.72 | | | 1.03 | |
| | Kendrick Bay | | 20.84 | | | | | 20.84 | |
| | Nakat Inlet | | 8.41 | 0.29 | | | | 8.70 | |
| | Anita Bay | | 4.22 | 0.22 | | | | 4.44 | |
| | Neets Bay | | | 0.62 | 0.25 | | | 0.86 | |
| | Neets Bay | | 58.17 | 2.46 | | | | 60.63 | |
| | Anita Bay | | 18.27 | | | | | 18.27 | |
| | Burnett Inlet | | | 0.22 | | 0.20 | | 0.42 | |
| | Neck Lake | | | 1.37 | | 0.14 | | 1.51 | |
| | Crystal Lake | | | 0.14 | 0.68 | | | 0.82 | |
| | Neets Bay | | | | 0.40 | | | 0.40 | |
| | Anita Bay | | | | 0.44 | | | 0.44 | |
| | NSRAA | Hidden Falls | | 44.27 | 2.80 | 1.05 | | | 48.13 |
| | | Takatz Bay | | 41.93 | | | | | 41.93 |
| Mist Cove | | | | 0.26 | | | | 0.26 | |
| Medvejie | | | | | | | | | |
| Deep Inlet | | | 45.68 | 0.12 | 0.84 | | | 46.63 | |
| Bear Cove | | 0.29 | 9.19 | 0.01 | 2.72 | | | 12.21 | |
| Mist Cove | | | | 0.02 | | | | 0.02 | |
| Haines projects | | | 1.75 | | | | | 1.75 | |
| AKI | | Port Armstrong | 78.17 | 3.88 | 2.62 | 0.27 | | 84.94 | |
| DIPAC | | Macaulay (Gastineau) | | 11.34 | 0.60 | 0.21 | | | 12.14 |
| | Sheep Creek | | 23.55 | | 0.10 | | | 23.66 | |
| | Amalga Harbor | | 34.64 | | | | | 34.64 | |
| | Boat Harbor | | 13.68 | | | | | 13.68 | |
| | Limestone Inlet | | 14.15 | | | | | 14.15 | |
| | Skagway | | | | 0.07 | | | 0.07 | |
| | Fish Cr/Auke Bay/Twin L | | | | 0.29 | | | 0.29 | |
| | Snettisham | | | | | 7.59 | | 7.59 | |
| | Sweetheart Lake | | | | | 0.24 | | 0.24 | |
| | Tahltn/Tuya Lakes | | | | | 3.42 | | 3.42 | |
| Tatsamenie Lake | | | | | 1.47 | | 1.47 | | |
| KTHC | Deer Mountain | | | 0.10 | 0.03 | | 0.01 | 0.13 | |
| KNFC | Gunnuk Creek | | 3.83 | 0.01 | | | | 3.84 | |
| | Southeast Cove | | 4.20 | 0.004 | | | | 4.20 | |
| SJC | Sheldon Jackson | 1.15 | 1.07 | 0.07 | 0.01 | | | 2.30 | |
| | Deep Inlet ^b | | 5.10 | | | | | 5.10 | |
| MIC | Tamgas Creek | | 7.62 | 1.97 | 0.36 | | | 9.94 | |
| POWHA | Klawock | | | 1.30 | | | | 1.30 | |
| NMFS | Little Port Walter | | | | 0.08 | | 0.01 | 0.09 | |
| Southeast Totals ^c | | 79.61 | 375.79 | 15.50 | 8.53 | 13.05 | 0.02 | 492.51 | |

-continued-

Table 9.–Page 2 of 2.

| Area/Operator/Location | | Pink | Chum | Coho | Chinook | Sockeye | Other | Total |
|------------------------------------------|--------------------------|--------------------|--------|-------|---------|---------|-------|----------|
| Prince William Sound | | | | | | | | |
| PWSAC | Armin F. Koernig | 159.62 | | | | | | 159.62 |
| | Wally Noerenberg | 84.80 | 90.40 | 0.87 | | | | 176.06 |
| | Port Chalmers | | 39.82 | | | | | 39.82 |
| | Whittier | | | 0.10 | | | | 0.10 |
| | Cordova | | | 0.04 | | | | 0.04 |
| | Chenega | | | 0.05 | | | | 0.05 |
| | Sawmill Bay | | 15.80 | | | | | 15.80 |
| | Gulkana I and II | | | | | | | |
| | Paxson Lake | | | | | 5.52 | | 5.52 |
| | Crosswind Lake | | | | | 10.02 | | 10.02 |
| | Summit Lake | | | | | 4.68 | | 4.68 |
| | Cannery Creek | 138.16 | | | | | | 138.16 |
| | Main Bay | | | | | 8.43 | | 8.43 |
| | VFDA | Solomon Gulch | 216.92 | | 1.51 | | | |
| Prince William Sound Totals ^c | | 599.49 | 146.02 | 2.56 | 0.00 | 28.65 | 0.00 | 776.72 |
| Cook Inlet | | | | | | | | |
| PGHC | Port Graham ^d | 13.86 | | | | 0.50 | | 14.36 |
| CIAA | Trail Lakes | | | | | | | |
| | Bear Creek | | | 0.56 | | 3.39 | | 3.96 |
| | Hidden Lake | | | | | 0.58 | | 0.58 |
| | Leisure Lake | | | | | 0.68 | | 0.68 |
| | Lowell Creek | | | 0.15 | | | | 0.15 |
| | Meadow Creek | | | | | 0.87 | | 0.87 |
| | Homer Spit | | | 0.32 | | | | 0.32 |
| | Seldovia | | | 0.11 | | | | 0.11 |
| | Tutka Bay | | | | | 0.26 | | 0.26 |
| | ADF&G | Ship Creek Complex | | | 1.24 | 1.80 | | 1.12 |
| Cook Inlet Totals ^c | | 13.86 | 0.00 | 2.38 | 1.80 | 6.28 | 1.12 | 25.46 |
| Kodiak | | | | | | | | |
| KRAA | Kitoi Bay | 115.66 | 17.57 | 0.98 | | | | 134.21 |
| | Crescent Lake | | | 0.12 | | | | 0.12 |
| | Jennifer Lake | | | 0.20 | | | | 0.20 |
| | Katmai | | | 0.02 | | | | 0.02 |
| | Little Kitoi | | | | | 0.59 | | 0.59 |
| | Ruth Lake | | | 0.03 | | | | 0.03 |
| | Pillar Creek | | | | | | | |
| | Abercrombie Lake | | | 0.003 | | | | 0.003 |
| | Big Waterfall Lake | | | | | 0.08 | | 0.08 |
| | Big Lake | | | 0.01 | | | | 0.01 |
| | Crescent Lake | | | | | 0.24 | | 0.24 |
| | Dark Lake | | | 0.004 | | | | 0.004 |
| | Hidden Lake | | | | | 0.42 | | 0.42 |
| | Island Lake | | | 0.03 | | | | 0.03 |
| | Jennifer Lake | | | | | 0.02 | | 0.02 |
| | Little Waterfall Lake | | | | | 0.18 | | 0.18 |
| | Malina Lake | | | | | 0.08 | | 0.08 |
| | Margaret Lake | | | 0.003 | | | | 0.003 |
| | Mission Lake | | | 0.01 | | | | 0.01 |
| | Monaska River | | | 0.01 | 0.03 | | | 0.04 |
| | Potato Lake | | | 0.01 | | | | 0.01 |
| | Ruth Lake | | | | | 0.05 | | 0.05 |
| | Spiridon Lake | | | | | 3.20 | | 3.20 |
| Kodiak Totals ^c | | 115.66 | 17.57 | 1.42 | 0.03 | 4.85 | 0.00 | 139.54 |
| Statewide Totals ^c | | 808.63 | 539.37 | 21.87 | 10.37 | 52.84 | 1.14 | 1,434.22 |

^a No releases were made from Bell Island or Burro Creek hatcheries.

^b Chum were reared at Medvejie.

^c Some figures may not total exactly due to rounding.

^d Sockeye were reared at Trail Lakes.

Table 10.—Estimated adult returns by species to Alaska enhancement projects in 2006, including common property harvests, as reported by operators.

| Area/Operator/Location | | Pink | Chum | Coho | Chinook | Sockeye | Other | Total |
|-----------------------------|-----------------------------|-------------------|-------------------|------------------|----------------|------------------|----------------|-------------------|
| Southeast | | | | | | | | |
| SSRAA | Whitman Lake | | 1,948,250 | 53,284 | 13,186 | | | 2,014,720 |
| | Neets Bay | | 1,676,600 | 68,531 | 12,230 | | | 1,757,361 |
| | Burnett Inlet | | | 40,979 | | 47,341 | | 88,320 |
| | Crystal Lake | | | 4,032 | 9,335 | | | 13,367 |
| | Anita Bay | | | | 13,370 | | | 13,370 |
| NSRAA | Hidden Falls | | 2,185,079 | 226,282 | 10,403 | | | 2,421,764 |
| | Medvejie | 3,347 | 2,273,951 | 94,950 | 11,140 | | | 2,383,388 |
| | Haines projects | | 5,722 | | | | | 5,722 |
| AKI | Port Armstrong | 631,060 | 7,561 | 37,904 | 1,816 | | | 678,341 |
| DIPAC | Macaulay | | 4,728,024 | 28,326 | 3,061 | | | 4,759,411 |
| | Snettisham | | | | | 480,085 | | 480,085 |
| | Sheep Creek ^a | | | | | | | |
| KNFC | Gunnuk Creek | | 318,198 | 538 | | | | 318,736 |
| SJC | Indian River | 41,460 | 34,811 | 6,957 | 34 | | | 83,262 |
| POWHA | Klawock | | | 36,170 | | 14,871 | | 51,041 |
| MIC | Tamgas Creek | | 93,997 | 48,934 | 5,592 | 1,831 | | 150,354 |
| | Little Port Walter | | | | 6,632 | | 643 | 7,275 |
| KTHC | Deer Mountain | | | 3,800 | 686 | | 23 | 4,509 |
| | Southeast Totals | 675,867 | 13,272,193 | 650,687 | 87,485 | 544,128 | 666 | 15,231,026 |
| Prince William Sound | | | | | | | | |
| PWSAC | Armin F. Koernig | 5,210,424 | | | | | | 5,210,424 |
| | Wally Noerenberg | 4,065,035 | 2,230,319 | 177,501 | | | | 6,472,855 |
| | Cannery Creek | 2,915,048 | | | | | | 2,915,048 |
| | Main Bay | | | | | 1,035,876 | | 1,035,876 |
| | Gulkana | | | | | 272,940 | | 272,940 |
| ADF&G | Ship Creek Complex | | | | 2,075 | | | 2,075 |
| VFDA | Solomon Gulch | 9,059,582 | | 295,009 | | | | 9,354,591 |
| | Prince William Sound Totals | 21,250,089 | 2,230,319 | 472,510 | 2,075 | 1,308,816 | 0 | 25,263,809 |
| Cook Inlet | | | | | | | | |
| PGHC | Port Graham | 284,522 | | | | | | 284,522 |
| CIAA | Trail Lakes | | | 4,157 | | 1,912,880 | | 1,917,037 |
| ADF&G | Ship Creek Complex | | | 74,168 | 19,691 | | 102,960 | 196,819 |
| | Cook Inlet Totals | 284,522 | 0 | 78,325 | 19,691 | 1,912,880 | 102,960 | 2,398,378 |
| Kodiak | | | | | | | | |
| KRAA | Kitoy Bay | 4,491,048 | 212,526 | 175,004 | | 29,410 | | 4,907,988 |
| | Pillar Creek | | | 1,600 | 400 | 90,063 | | 92,063 |
| | Kodiak Totals | 4,491,048 | 212,526 | 176,604 | 400 | 119,473 | 0 | 5,000,051 |
| Statewide Totals | | 26,701,526 | 15,715,038 | 1,378,126 | 109,651 | 3,885,297 | 103,626 | 47,893,264 |

^a Sheep Creek returns are listed under Macaulay hatchery.

Table 11.—Projected adult returns, by species, to Alaska enhancement projects in 2006.

| Area/Operator/Location | Pink | Chum | Coho | Chinook | Sockeye | Other | Total | |
|-----------------------------|---------------------------------|------------|------------|-----------|-----------|-----------|------------|------------|
| Southeast | | | | | | | | |
| SSRAA | Whitman Lake | | 25,000 | 15,000 | | | 40,000 | |
| | Nakat Inlet | 195,000 | 30,000 | | | | 225,000 | |
| | Anita Bay | 300,000 | 25,000 | 7,000 | | | 332,000 | |
| | Kendrick Bay | 1,500,000 | | | | | 1,500,000 | |
| | Long Lake | | | 2,500 | | | 2,500 | |
| | Neets Bay | 2,410,000 | 280,000 | 15,000 | | | 2,705,000 | |
| | Burnett Inlet | | 10,000 | | 1,000 | | 11,000 | |
| | Neck Lake | | 75,000 | | 4,500 | | 79,500 | |
| | Crystal Lake | | 3,500 | 7,600 | | | 11,100 | |
| NSRAA | Hidden Falls | 2,470,000 | 245,000 | 11,200 | | | 2,726,200 | |
| | Medvejie Creek | 1,630,000 | 10,300 | 16,000 | | | 1,656,300 | |
| | Haines projects | 21,410 | | | | | 21,410 | |
| AKI | Port Armstrong | 2,885,016 | 174,617 | 261,606 | 1,998 | | 3,323,237 | |
| DIPAC | Macaulay (Gastineau) | | | | | | | |
| | Gastineau Channel | 2,194,000 | 36,000 | 3,800 | | | 2,233,800 | |
| | Amalga Harbor | 1,598,000 | | | | | 1,598,000 | |
| | Boat Harbor | 545,000 | | | | | 545,000 | |
| | Limestone Inlet | 130,000 | | | | | 130,000 | |
| | Pullen Creek | | | 600 | | | 600 | |
| | Snettisham | | | | 193,000 | | 193,000 | |
| | Sweetheart Lake | | | | 4,600 | | 4,600 | |
| | Taku River* | | | | | | | |
| | Stikine River* | | | | | | | |
| KTHC | Deer Mountain | | 3,231 | 983 | | 28 | 4,242 | |
| KNFC | Gunnuk Creek | 136,495 | 670 | | | | 137,165 | |
| | Southeast Cove | 753,495 | | | | | 753,495 | |
| SJC | Indian River/Deep Inlet | 46,171 | 144,761 | 6,957 | 87 | | 197,976 | |
| Federal | Little Port Walter | | | 1,500 | | 300 | 1,800 | |
| MIC | Tamgas | 118,000 | 130,000 | 4,000 | 4,200 | | 256,200 | |
| POWHA | Klawock | | 39,056 | | 14,583 | | 53,639 | |
| Southeast Totals | | 2,931,187 | 14,320,778 | 1,181,320 | 87,268 | 221,883 | 328 | 18,742,764 |
| Prince William Sound | | | | | | | | |
| PWSAC | Armin F. Koernig | 7,200,000 | | | | | 7,200,000 | |
| | Wally Noerenberg | 4,500,000 | 3,505,000 | 78,000 | | | 8,083,000 | |
| | Cannery Creek | 6,200,000 | | | | | 6,200,000 | |
| | Main Bay | | | | 952,000 | | 952,000 | |
| | Gulkana | | | | 311,000 | | 311,000 | |
| VFDA | Solomon Gulch | 12,169,280 | | 161,740 | | | 12,331,020 | |
| Prince William Sound Totals | | 30,069,280 | 3,505,000 | 239,740 | 0 | 1,263,000 | 0 | 35,077,020 |
| Cook Inlet | | | | | | | | |
| PGHC | Port Graham | 277,274 | | | 6,500 | | 283,774 | |
| CIAA | Trail Lakes | | | | | | | |
| | Hazel/Leisure | | | | 105,500 | | 105,500 | |
| | Kirschner Lake | | | | 23,600 | | 23,600 | |
| | Hidden Lake | | | | 62,000 | | 62,000 | |
| | Bear Lake* | | | 11,800 | | | 11,800 | |
| | Tustumena Lake | | | | 1,432,000 | | 1,432,000 | |
| ADF&G | Ship Creek Complex ^a | | 74,168 | 20,704 | | 101,461 | 196,333 | |
| Cook Inlet Totals | | 277,274 | 0 | 85,968 | 20,704 | 1,629,600 | 101,461 | 2,115,007 |
| Kodiak | | | | | | | | |
| KRAA | Kitoy Bay | 4,711,684 | 253,843 | 157,361 | | 71,930 | 5,194,818 | |
| | Pillar Creek | | | 1,600 | 440 | 333,585 | 335,625 | |
| Kodiak Totals | | 4,711,684 | 253,843 | 158,961 | 440 | 405,515 | 0 | 5,530,443 |
| Statewide Totals | | 37,989,425 | 18,079,621 | 1,665,989 | 108,412 | 3,519,998 | 101,789 | 61,465,234 |

* Sockeye projection was not available in time for publication.

^a Ship Creek Complex is the combination of Elmendorf Hatchery and Fort Richardson Hatchery.

Table 12.—Cumulative state loans made to PNP salmon hatchery corporations and enhancement funds returned to associations.

| Region/Corporation (number of permits) | State Loans | | | | | Enhancement Funds Generated Through Assessments and Returned to Associations via Contract | | 2006 Reported Revenues ^b |
|--------------------------------------------------------------------------------|-----------------------------|--------------|-------------------|--------------|---------------------------------------|----------------------------------------------------------------------------------------------------|---------------|-------------------------------------------|
| | For Capital Construction | | For Operations | | Cumulative Repayments ^a | FY 2007 | Cumulative | |
| | FY 2006 | Cumulative | FY 2006 | Cumulative | | | | |
| Southern Southeast | | | | | | | | |
| SSRAA (Southern Southeast Regional Aquaculture Association) – (4) ^c | | \$10,663,000 | \$700,000 | \$7,349,196 | \$21,920,567 | \$898,421 | \$34,564,839 | \$ 7,022,627 |
| POWHA (Prince of Wales Hatchery Association) - (1) | | \$496,000 | | \$1,870,000 | \$0 | | \$0 | \$ 137,171 |
| KTHC (Ketchikan Tribal Hatchery Corporation) - (1) | | | | | | | \$0 | \$ 126,975 |
| Northern Southeast | | | | | | | | |
| NSRAA (Northern Southeast Regional Aquaculture Association) – (3) ^c | | \$2,787,765 | | \$4,615,544 | \$5,963,695 | \$1,281,430 | \$28,408,810 | \$ 3,423,234 |
| AKI (Armstrong-Keta, Inc.) — (1) | | \$4,302,645 | | \$6,058,095 | \$2,872,883 | | \$0 | \$ 357,687 |
| BCF (Burro Creek Farms, Inc.) — (1) | | \$143,500 | | \$290,875 | \$608,708 | | \$0 | \$ 0 |
| DIPAC (Douglas Island Pink and Chum, Inc.) - (3) | | \$9,364,000 | | \$13,664,000 | \$8,058,655 | | \$0 | \$ 8,856,115 |
| KNFC (Kake Nonprofit Fisheries Corporation) - (1) | | \$2,858,724 | | \$6,128,883 | \$656,205 | | \$0 | \$ 523,101 |
| SJC (Sheldon Jackson College) — (1) | | \$423,624 | | | \$723,476 | | \$0 | \$ 90,000 |
| Prince William Sound | | | | | | | | |
| PWSAC (Prince William Sound Aquaculture Association) – (5) ^d | | \$24,475,419 | | \$8,585,500 | \$22,555,521 | \$906,274 | \$17,193,636 | \$10,374,654 |
| VFDA (Valdez Fisheries Development Association) - (1) | | \$5,950,310 | | \$8,024,246 | \$11,402,632 | | \$0 | \$ 3,295,987 |
| Cook Inlet | | | | | | | | |
| PGHC (Port Graham Hatchery Corporation) - (1) | | \$1,107,000 | \$363,045 | \$1,479,034 | \$45,864 | | \$0 | \$ 145,149 |
| CIAA (Cook Inlet Aquaculture Association) - (3) ^d | | \$1,576,381 | | \$2,983,369 | \$2,511,539 | \$656,099 | \$21,609,057 | \$ 2,232,574 |
| Kodiak | | | | | | | | |
| KRAA (Kodiak Regional Aquaculture Association) - (2) ^{d,e} | | \$454,700 | | | \$164,448 | \$590,222 | \$13,305,494 | \$ 1,917,003 |
| Chignik | | | | | | | | |
| CRAA (Chignik Regional Aquaculture Association) - (0) ^d | | | | | | \$134,387 | \$3,387,404 | \$ 0 |
| Statewide Totals | | \$64,603,068 | \$1,063,045 | \$61,048,742 | | \$4,466,833 | \$118,469,240 | \$38,502,277 |

Source: as reported in Department of Community and Economic Development, Division of Investments - Fisheries Enhancement Revolving Loan Fund Program Overview.

^a Total repayments received and applied over the life of the loan relationship.

^b Preliminary data includes: cost recovery, carcass sales, rentals, donations, etc.

^c A 3% mandatory assessment tax was collected from commercial fishermen.

^d A 2% mandatory assessment tax was collected from commercial fishermen.

^e Revenue reported as of 6/30/2006.

Table 13.—Summary of anadromous salmon production (all species) from Alaska hatcheries and enhancement projects.

| Year | Egg Takes (millions) | Fry Releases (millions) | Total Returns (thousands) | Year | Egg Takes (millions) | Fry Releases (millions) | Total Returns (thousands) |
|------|-------------------------|----------------------------|------------------------------|-------|-------------------------|----------------------------|------------------------------|
| 1966 | NA | 1 | 0 | 1987 | 1,369 | 824 | 25,354 |
| 1967 | NA | 1 | 0 | 1988 | 1,280 | 1,114 | 17,820 |
| 1968 | NA | 1 | 0 | 1989 | 1,418 | 1,087 | 34,530 |
| 1969 | NA | 1 | 0 | 1990 | 1,603 | 1,154 | 47,422 |
| 1970 | NA | 1 | 0 | 1991 | 1,634 | 1,319 | 46,109 |
| 1971 | NA | 1 | 0 | 1992 | 1,725 | 1,323 | 23,187 |
| 1972 | NA | 2 | 0 | 1993 | 1,685 | 1,475 | 32,609 |
| 1973 | 2 | 0 | 0 | 1994 | 1,758 | 1,302 | 55,172 |
| 1974 | 8 | 3 | 0 | 1995 | 1,913 | 1,503 | 38,062 |
| 1975 | 36 | 11 | 18 | 1996 | 1,687 | 1,638 | 49,229 |
| 1976 | 61 | 13 | 38 | 1997 | 1,734 | 1,363 | 50,839 |
| 1977 | 100 | 41 | 176 | 1998 | 1,776 | 1,453 | 56,468 |
| 1978 | 133 | 75 | 337 | 1999 | 1,791 | 1,435 | 71,276 |
| 1979 | 152 | 87 | 1,967 | 2000 | 1,762 | 1,476 | 62,960 |
| 1980 | 292 | 96 | 3,024 | 2001 | 1,792 | 1,481 | 61,729 |
| 1981 | 475 | 212 | 4,885 | 2002 | 1,862 | 1,484 | 49,345 |
| 1982 | 548 | 331 | 6,939 | 2003 | 1,927 | 1,494 | 80,049 |
| 1983 | 668 | 412 | 6,560 | 2004 | 1,741 | 1,651 | 46,448 |
| 1984 | 829 | 506 | 7,689 | 2005 | 1,707 | 1,428 | 80,973 |
| 1985 | 995 | 659 | 16,650 | 2006 | 1,824 | 1,433 | 47,790 |
| 1986 | 1,026 | 762 | 12,808 | Total | 36,466 | 28,455 | 977,861 |

Table 14.—Summary of pink salmon production from Alaska hatcheries and enhancement projects.

| Year | Egg Takes (millions) | Fry Releases (millions) | Total Returns (thousands) | Year | Egg Takes (millions) | Fry Releases (millions) | Total Returns (thousands) |
|------|-------------------------|----------------------------|------------------------------|------|-------------------------|----------------------------|------------------------------|
| 1974 | 5 | 0 | | 1991 | 998 | 862 | 38,132 |
| 1975 | 15 | 5 | 18 | 1992 | 1,077 | 797 | 14,879 |
| 1976 | 23 | 4 | 16 | 1993 | 1,031 | 919 | 20,693 |
| 1977 | 66 | 18 | 175 | 1994 | 1,076 | 790 | 41,489 |
| 1978 | 79 | 50 | 321 | 1995 | 1,162 | 921 | 25,415 |
| 1979 | 91 | 60 | 1,591 | 1996 | 929 | 999 | 29,298 |
| 1980 | 174 | 64 | 2,310 | 1997 | 1,064 | 772 | 33,956 |
| 1981 | 328 | 135 | 4,371 | 1998 | 1,121 | 873 | 38,651 |
| 1982 | 344 | 218 | 6,610 | 1999 | 1,092 | 878 | 51,973 |
| 1983 | 406 | 264 | 5,939 | 2000 | 1,074 | 880 | 40,395 |
| 1984 | 443 | 332 | 5,298 | 2001 | 1,097 | 942 | 47,247 |
| 1985 | 604 | 366 | 14,158 | 2002 | 1,168 | 938 | 30,835 |
| 1986 | 511 | 484 | 9,044 | 2003 | 1,105 | 962 | 59,774 |
| 1987 | 840 | 443 | 21,960 | 2004 | 960 | 965 | 30,564 |
| 1988 | 736 | 730 | 13,838 | 2005 | 950 | 808 | 69,076 |
| 1989 | 975 | 675 | 31,754 | 2006 | 964 | 809 | 26,702 |
| 1990 | 1,014 | 811 | 41,207 | | | | |

Table 15.—Summary of chum salmon production from Alaska hatcheries and enhancement projects.

| Year | Egg Takes (millions) | Fry Releases (millions) | Total Returns (thousands) | Year | Egg Takes (millions) | Releases (millions) | Total Returns (thousands) |
|------|-------------------------|----------------------------|------------------------------|------|-------------------------|------------------------|------------------------------|
| 1974 | 1 | 0 | | 1991 | 480 | 365 | 2,181 |
| 1975 | 5 | 1 | | 1992 | 510 | 428 | 3,089 |
| 1976 | 7 | 2 | | 1993 | 496 | 469 | 6,709 |
| 1977 | 8 | 3 | 1 | 1994 | 529 | 407 | 8,996 |
| 1978 | 12 | 4 | 3 | 1995 | 596 | 473 | 9,808 |
| 1979 | 24 | 7 | 6 | 1996 | 590 | 535 | 16,353 |
| 1980 | 74 | 13 | 16 | 1997 | 524 | 485 | 12,595 |
| 1981 | 87 | 46 | 53 | 1998 | 517 | 479 | 13,468 |
| 1982 | 126 | 63 | 153 | 1999 | 571 | 461 | 15,072 |
| 1983 | 170 | 86 | 301 | 2000 | 576 | 508 | 18,698 |
| 1984 | 269 | 108 | 1,809 | 2001 | 564 | 468 | 9,167 |
| 1985 | 244 | 201 | 1,404 | 2002 | 549 | 451 | 12,565 |
| 1986 | 374 | 182 | 1,931 | 2003 | 681 | 436 | 13,711 |
| 1987 | 380 | 298 | 1,930 | 2004 | 669 | 578 | 10,932 |
| 1988 | 392 | 288 | 2,490 | 2005 | 626 | 549 | 7,553 |
| 1989 | 293 | 310 | 1,347 | 2006 | 715 | 539 | 15,715 |
| 1990 | 450 | 241 | 2,039 | | | | |

Table 16.—Summary of coho salmon production from Alaska hatcheries and enhancement projects.

| Year | Egg Takes (millions) | Fry Releases (millions) | Total Returns (thousands) | Year | Egg Takes (millions) | Fry Releases (millions) | Total Returns (thousands) |
|------|-------------------------|----------------------------|------------------------------|------|-------------------------|----------------------------|------------------------------|
| 1966 | NA | 1 | | 1987 | 26 | 15 | 451 |
| 1967 | NA | 1 | | 1988 | 28 | 19 | 251 |
| 1968 | NA | 1 | | 1989 | 23 | 16 | 489 |
| 1969 | NA | 1 | | 1990 | 22 | 18 | 940 |
| 1970 | NA | 1 | | 1991 | 23 | 14 | 1,251 |
| 1971 | NA | 0 | | 1992 | 21 | 14 | 1,378 |
| 1972 | NA | 2 | | 1993 | 25 | 15 | 915 |
| 1973 | NA | 2 | | 1994 | 28 | 18 | 1,306 |
| 1974 | NA | 2 | | 1995 | 27 | 21 | 1,312 |
| 1975 | 7 | 4 | 0 | 1996 | 30 | 21 | 1,087 |
| 1976 | 5 | 3 | 22 | 1997 | 36 | 23 | 1,456 |
| 1977 | 5 | 5 | | 1998 | 30 | 21 | 1,365 |
| 1978 | 5 | 3 | | 1999 | 26 | 22 | 1,553 |
| 1979 | 4 | 3 | 49 | 2000 | 28 | 19 | 1,631 |
| 1980 | 4 | 2 | 21 | 2001 | 29 | 21 | 1,799 |
| 1981 | 8 | 3 | 55 | 2002 | 36 | 20 | 2,120 |
| 1982 | 16 | 3 | 108 | 2003 | 35 | 23 | 1,563 |
| 1983 | 17 | 9 | 96 | 2004 | 34 | 27 | 1,203 |
| 1984 | 21 | 11 | 179 | 2005 | 34 | 22 | 1,444 |
| 1985 | 20 | 15 | 308 | 2006 | 36 | 22 | 1,378 |
| 1986 | 24 | 13 | 647 | | | | |

Table 17.—Summary of Chinook salmon production from Alaska hatcheries and enhancement projects.

| Year | Egg Takes (millions) | Fry Releases (millions) | Total Returns (thousands) | Year | Egg Takes (millions) | Fry Releases (millions) | Total Returns (thousands) |
|------|-------------------------|----------------------------|------------------------------|------|-------------------------|----------------------------|------------------------------|
| 1966 | NA | 0 | | 1987 | 17 | 8 | 93 |
| 1967 | NA | 1 | | 1988 | 18 | 9 | 75 |
| 1968 | NA | 0 | | 1989 | 15 | 8 | 76 |
| 1969 | NA | 0 | | 1990 | 17 | 10 | 116 |
| 1970 | NA | 0 | | 1991 | 20 | 7 | 172 |
| 1971 | NA | 0 | | 1992 | 13 | 10 | 131 |
| 1972 | NA | 0 | | 1993 | 12 | 12 | 112 |
| 1973 | NA | 0 | | 1994 | 13 | 10 | 126 |
| 1974 | 0 | 1 | | 1995 | 14 | 7 | 171 |
| 1975 | 1 | 0 | | 1996 | 11 | 7 | 171 |
| 1976 | 1 | 0 | | 1997 | 12 | 7 | 150 |
| 1977 | 3 | 1 | | 1998 | 13 | 8 | 104 |
| 1978 | 2 | 1 | 0 | 1999 | 12 | 8 | 112 |
| 1979 | 2 | 1 | 3 | 2000 | 11 | 9 | 159 |
| 1980 | 3 | 1 | 7 | 2001 | 13 | 10 | 188 |
| 1981 | 1 | 1 | 5 | 2002 | 16 | 8 | 157 |
| 1982 | 3 | 1 | 12 | 2003 | 12 | 9 | 170 |
| 1983 | 7 | 2 | 13 | 2004 | 15 | 9 | 194 |
| 1984 | 10 | 4 | 21 | 2005 | 16 | 9 | 139 |
| 1985 | 19 | 4 | 26 | 2006 | 16 | 10 | 110 |
| 1986 | 16 | 6 | 40 | | | | |

Table 18.—Summary of sockeye salmon production from Alaska hatcheries and enhancement projects.

| Year | Egg Takes (millions) | Fry Releases (millions) | Total Returns (thousands) | Year | Egg Takes (millions) | Fry Releases (millions) | Total Returns (thousands) |
|------|-------------------------|----------------------------|------------------------------|------|-------------------------|----------------------------|------------------------------|
| 1972 | NA | 0 | | 1990 | 100 | 74 | 3,120 |
| 1973 | 2 | 0 | | 1991 | 113 | 70 | 4,373 |
| 1974 | 2 | 1 | | 1992 | 104 | 74 | 3,710 |
| 1975 | 8 | 1 | | 1993 | 122 | 61 | 4,180 |
| 1976 | 24 | 2 | | 1994 | 112 | 77 | 3,255 |
| 1977 | 19 | 14 | 0 | 1995 | 115 | 81 | 1,356 |
| 1978 | 35 | 16 | 13 | 1996 | 127 | 75 | 2,320 |
| 1979 | 30 | 17 | 318 | 1997 | 98 | 75 | 2,682 |
| 1980 | 38 | 15 | 670 | 1998 | 95 | 72 | 2,879 |
| 1981 | 51 | 28 | 401 | 1999 | 91 | 67 | 2,566 |
| 1982 | 59 | 45 | 56 | 2000 | 74 | 60 | 2,076 |
| 1983 | 68 | 53 | 210 | 2001 | 89 | 39 | 3,328 |
| 1984 | 86 | 52 | 382 | 2002 | 93 | 67 | 3,668 |
| 1985 | 108 | 73 | 754 | 2003 | 94 | 64 | 4,831 |
| 1986 | 101 | 77 | 1,146 | 2004 | 63 | 72 | 3,554 |
| 1987 | 107 | 60 | 920 | 2005 | 82 | 39 | 2,761 |
| 1988 | 107 | 69 | 1,166 | 2006 | 93 | 53 | 3,885 |
| 1989 | 112 | 77 | 864 | | | | |

Table 19.—Summary of statewide salmon production from private nonprofit hatcheries in Alaska, as reported by operators.

| Year | Egg take (millions) | Fry release (millions) | Total return (thousands) | Cost recovery (thousands) | Cost recovery revenue ^a |
|-----------------------------------------------------|---------------------|------------------------|--------------------------|---------------------------|------------------------------------|
| 1975 | 8 | | | | |
| 1976 | 17 | 4 | | | |
| 1977 | 37 | 12 | 160 | 109 | |
| 1978 | 37 | 27 | 161 | 215 | |
| 1979 | 54 | 29 | 357 | 253 | \$272,000 |
| 1980 | 126 | 36 | 1,506 | 346 | \$482,000 |
| 1981 | 224 | 102 | 2,564 | 856 | \$1,274,640 |
| 1982 | 234 | 127 | 5,341 | 1,364 | \$1,170,000 |
| 1983 | 261 | 170 | 4,286 | 886 | \$671,000 |
| 1984 | 373 | 218 | 4,764 | 1,043 | \$1,655,000 |
| 1985 | 470 | 302 | 8,106 | 1,854 | \$1,902,000 |
| 1986 | 522 | 381 | 7,904 | 1,212 | \$1,861,000 |
| 1987 | 868 | 461 | 19,097 | 4,184 | \$6,562,000 |
| 1988 | 1,046 | 820 | 14,344 | 2,498 | \$8,789,000 |
| 1989 | 1,109 | 860 | 24,045 | 15,012 | \$16,611,000 |
| 1990 | 1,249 | 925 | 42,405 | 10,388 | \$12,898,000 |
| 1991 | 1,326 | 1,087 | 40,265 | 13,170 | \$6,317,000 |
| 1992 | 1,428 | 1,075 | 18,175 | 7,255 | \$10,239,000 |
| 1993 | 1,613 | 1,426 | 27,781 | 4,848 | \$7,340,000 |
| 1994 | 1,726 | 1,268 | 52,023 | 15,906 | \$17,104,000 |
| 1995 | 1,877 | 1,174 | 37,593 | 9,554 | \$12,924,000 |
| 1996 | 1,735 | 1,632 | 48,946 | 14,657 | \$14,325,000 |
| 1997 | 1,713 | 1,349 | 50,629 | 19,352 | \$16,111,000 |
| 1998 | 1,759 | 1,444 | 56,154 | 15,651 | \$14,535,000 |
| 1999 | 1,778 | 1,428 | 71,140 | 22,608 | \$21,759,078 |
| 2000 | 1,750 | 1,469 | 62,743 | 19,007 | \$26,065,000 |
| 2001 | 1,779 | 1,473 | 59,885 | 18,398 | \$22,196,000 |
| 2002 | 1,849 | 1,478 | 49,061 | 19,005 | \$19,462,990 |
| 2003 | 1,914 | 1,490 | 79,897 | 22,937 | \$19,999,879 |
| 2004 | 1,727 | 1,574 | 46,226 | 21,986 | \$17,915,212 |
| 2005 | 1,688 | 1,417 | 80,740 | 21,245 | \$16,223,805 |
| 2006 | 1,806 | 1,420 | 47,537 | 18,928 | \$31,556,202 |
| Cumulative Hatchery Revenues from Special Harvests: | | | | | \$328,220,806 |

^a Preliminary values. 2006 Season and value data from the Alaska Department of Fish and Game website: <http://www.cf.adfg.state.ak.us/geninfo/finfish/salmon/catchval/blusheet/06exvesl.php>

Table 20.—Summary of pink salmon production from private nonprofit hatcheries in Alaska, as reported by operators.

| Year | Egg take (millions) | Fry release (millions) | Total return (thousands) | Cost recovery (thousands) |
|------|------------------------|---------------------------|-----------------------------|------------------------------|
| 1975 | 8 | | | |
| 1976 | 16 | 4 | | |
| 1977 | 35 | 12 | 160 | 109 |
| 1978 | 35 | 26 | 160 | 215 |
| 1979 | 47 | 28 | 356 | 253 |
| 1980 | 98 | 32 | 1,505 | 346 |
| 1981 | 188 | 79 | 2,491 | 838 |
| 1982 | 185 | 103 | 5,253 | 1,359 |
| 1983 | 186 | 127 | 4,087 | 843 |
| 1984 | 242 | 159 | 3,638 | 583 |
| 1985 | 340 | 199 | 7,405 | 1,699 |
| 1986 | 325 | 272 | 6,768 | 949 |
| 1987 | 618 | 299 | 17,964 | 3,625 |
| 1988 | 645 | 626 | 12,258 | 2,008 |
| 1989 | 806 | 553 | 22,561 | 14,529 |
| 1990 | 789 | 685 | 39,920 | 9,846 |
| 1991 | 831 | 704 | 37,081 | 12,367 |
| 1992 | 883 | 648 | 13,200 | 5,977 |
| 1993 | 1,029 | 920 | 19,844 | 2,740 |
| 1994 | 1,075 | 787 | 40,939 | 13,384 |
| 1995 | 1,162 | 621 | 25,415 | 6,819 |
| 1996 | 929 | 999 | 29,298 | 9,401 |
| 1997 | 1,064 | 772 | 33,956 | 14,027 |
| 1998 | 1,121 | 873 | 38,652 | 10,693 |
| 1999 | 1,092 | 878 | 51,973 | 17,623 |
| 2000 | 1,074 | 880 | 40,395 | 12,381 |
| 2001 | 1,097 | 942 | 47,247 | 14,564 |
| 2002 | 1,168 | 938 | 30,835 | 12,916 |
| 2003 | 1,105 | 962 | 59,773 | 15,376 |
| 2004 | 960 | 965 | 30,564 | 17,040 |
| 2005 | 950 | 808 | 69,076 | 18,099 |
| 2006 | 964 | 809 | 26,702 | 12,620 |

Table 21.—Summary of chum salmon production from private nonprofit hatcheries in Alaska, as reported by operators.

| Year | Egg take (millions) | Fry release (millions) | Total return (thousands) | Cost recovery (thousands) |
|------|------------------------|---------------------------|-----------------------------|------------------------------|
| 1975 | <1 | <1 | | |
| 1976 | <1 | <1 | | |
| 1977 | 2 | <1 | | |
| 1978 | 2 | 1 | 1 | 0 |
| 1979 | 7 | 1 | <1 | 0 |
| 1980 | 27 | 3 | 2 | 0 |
| 1981 | 32 | 22 | 21 | 12 |
| 1982 | 46 | 24 | 22 | <1 |
| 1983 | 69 | 42 | 127 | 35 |
| 1984 | 122 | 55 | 1,001 | 437 |
| 1985 | 119 | 98 | 525 | 123 |
| 1986 | 181 | 100 | 780 | 189 |
| 1987 | 235 | 150 | 955 | 499 |
| 1988 | 370 | 186 | 1,835 | 470 |
| 1989 | 267 | 287 | 1,102 | 298 |
| 1990 | 425 | 217 | 1,633 | 370 |
| 1991 | 442 | 359 | 1,959 | 404 |
| 1992 | 495 | 394 | 3,079 | 706 |
| 1993 | 458 | 452 | 6,387 | 1,782 |
| 1994 | 520 | 402 | 8,783 | 2,128 |
| 1995 | 590 | 463 | 9,800 | 2,252 |
| 1996 | 651 | 534 | 16,205 | 4,782 |
| 1997 | 517 | 477 | 13,250 | 4,643 |
| 1998 | 513 | 479 | 13,423 | 4,355 |
| 1999 | 568 | 460 | 15,072 | 4,361 |
| 2000 | 572 | 508 | 18,698 | 6,060 |
| 2001 | 560 | 468 | 7,620 | 3,104 |
| 2002 | 547 | 450 | 12,561 | 5,074 |
| 2003 | 675 | 436 | 13,695 | 6,514 |
| 2004 | 664 | 574 | 10,905 | 4,102 |
| 2005 | 615 | 544 | 7,524 | 2,428 |
| 2006 | 705 | 532 | 15,621 | 5,458 |

Table 22.—Summary of coho salmon production from private nonprofit hatcheries in Alaska, as reported by operators.

| Year | Egg take (millions) | Juvenile release (millions) | Total return (thousands) | Cost recovery (thousands) |
|------|------------------------|--------------------------------|-----------------------------|------------------------------|
| 1975 | <1 | | | |
| 1976 | <1 | | | |
| 1977 | <1 | <1 | | |
| 1978 | 1 | <1 | <1 | |
| 1979 | 1 | <1 | <1 | |
| 1980 | 1 | 1 | <1 | |
| 1981 | 3 | 1 | 52 | 6 |
| 1982 | 3 | 1 | 62 | 2 |
| 1983 | 6 | 2 | 72 | 7 |
| 1984 | 6 | 3 | 121 | 22 |
| 1985 | 4 | 4 | 168 | 30 |
| 1986 | 8 | 4 | 345 | 73 |
| 1987 | 9 | 5 | 169 | 58 |
| 1988 | 13 | 5 | 122 | 11 |
| 1989 | 14 | 9 | 305 | 89 |
| 1990 | 14 | 11 | 692 | 141 |
| 1991 | 16 | 12 | 1,001 | 368 |
| 1992 | 17 | 10 | 1,070 | 378 |
| 1993 | 19 | 11 | 657 | 144 |
| 1994 | 24 | 13 | 1,189 | 240 |
| 1995 | 22 | 14 | 966 | 319 |
| 1996 | 28 | 20 | 1,041 | 253 |
| 1997 | 26 | 18 | 921 | 258 |
| 1998 | 23 | 17 | 1,124 | 342 |
| 1999 | 20 | 18 | 1,452 | 372 |
| 2000 | 22 | 15 | 1,456 | 320 |
| 2001 | 23 | 17 | 1,561 | 433 |
| 2002 | 31 | 17 | 1,875 | 766 |
| 2003 | 30 | 22 | 1,433 | 395 |
| 2004 | 29 | 23 | 1,043 | 258 |
| 2005 | 30 | 19 | 1,274 | 289 |
| 2006 | 31 | 19 | 1,255 | 276 |

Table 23.—Summary of Chinook salmon production from private nonprofit hatcheries in Alaska, as reported by operators.

| Year | Egg take (millions) | Juvenile release (millions) | Total return (thousands) | Cost recovery (thousands) |
|------|------------------------|--------------------------------|-----------------------------|------------------------------|
| 1980 | <1 | | | |
| 1981 | <1 | | | |
| 1982 | <1 | <1 | 4 | 3 |
| 1983 | 1 | <1 | 1 | 0 |
| 1984 | 3 | <1 | 4 | 1 |
| 1985 | 6 | 1 | 8 | 2 |
| 1986 | 7 | 4 | 11 | 1 |
| 1987 | 5 | 6 | 9 | 2 |
| 1988 | 7 | 2 | 23 | 9 |
| 1989 | 7 | 3 | 37 | 18 |
| 1990 | 9 | 5 | 60 | 22 |
| 1991 | 10 | 4 | 70 | 26 |
| 1992 | 7 | 6 | 42 | 23 |
| 1993 | 5 | 7 | 54 | 26 |
| 1994 | 6 | 6 | 58 | 15 |
| 1995 | 6 | 4 | 98 | 28 |
| 1996 | 8 | 4 | 97 | 34 |
| 1997 | 8 | 5 | 85 | 32 |
| 1998 | 7 | 5 | 76 | 19 |
| 1999 | 7 | 5 | 77 | 16 |
| 2000 | 8 | 7 | 117 | 37 |
| 2001 | 10 | 7 | 130 | 49 |
| 2002 | 10 | 6 | 122 | 33 |
| 2003 | 10 | 6 | 138 | 48 |
| 2004 | 11 | 7 | 164 | 62 |
| 2005 | 12 | 7 | 106 | 26 |
| 2006 | 13 | 8 | 76 | 15 |

Table 24.—Summary of sockeye salmon production from private nonprofit hatcheries in Alaska, as reported by operators.

| Year | Egg take (millions) | Juvenile release (millions) | Total return (thousands) | Cost recovery (thousands) |
|------|------------------------|--------------------------------|-----------------------------|------------------------------|
| 1985 | <1 | | | |
| 1986 | 1 | <1 | | |
| 1987 | 2 | 1 | | |
| 1988 | 11 | 1 | 66 | 0 |
| 1989 | 15 | 8 | 40 | 79 |
| 1990 | 12 | 8 | 101 | 9 |
| 1991 | 27 | 8 | 154 | 5 |
| 1992 | 26 | 16 | 784 | 171 |
| 1993 | 103 | 37 | 839 | 156 |
| 1994 | 100 | 60 | 1,054 | 139 |
| 1995 | 97 | 72 | 1,313 | 136 |
| 1996 | 119 | 75 | 2,306 | 187 |
| 1997 | 98 | 77 | 2,417 | 392 |
| 1998 | 95 | 71 | 2,880 | 242 |
| 1999 | 91 | 67 | 2,566 | 236 |
| 2000 | 74 | 60 | 2,076 | 209 |
| 2001 | 89 | 39 | 3,327 | 248 |
| 2002 | 93 | 67 | 3,668 | 216 |
| 2003 | 94 | 64 | 4,832 | 604 |
| 2004 | 63 | 72 | 3,550 | 524 |
| 2005 | 82 | 39 | 2,761 | 404 |
| 2006 | 92 | 53 | 3,883 | 559 |

Table 25.—Alaska commercial salmon fishery harvest average weights and prices.

| Area/Species | Average Harvest ^a | |
|----------------------|------------------------------|-----------|
| | Weight (lb) | Price/lb. |
| Cook Inlet | | |
| Chinook | 18.57 | \$1.55 |
| Sockeye | 5.03 | \$1.00 |
| Coho | 6.47 | \$0.90 |
| Pink | 3.72 | \$0.13 |
| Chum | 7.99 | \$0.25 |
| Kodiak | | |
| Chinook | 10.45 | \$0.94 |
| Sockeye | 5.10 | \$0.76 |
| Coho | 7.79 | \$0.67 |
| Pink | 3.70 | \$0.12 |
| Chum | 8.41 | \$0.27 |
| Prince William Sound | | |
| Chinook | 20.97 | \$5.00 |
| Sockeye | 5.74 | \$1.65 |
| Coho | 8.27 | \$0.81 |
| Pink | 3.56 | \$0.16 |
| Chum | 8.33 | \$0.33 |
| Southeast | | |
| Chinook | 15.14 | \$3.37 |
| Sockeye | 5.67 | \$1.09 |
| Coho | 6.83 | \$1.41 |
| Pink | 4.02 | \$0.12 |
| Chum | 8.92 | \$0.35 |

^a Data from the Alaska Department of Fish and Game website:
<http://www.state.ak.us/adfg/geninfo/finfish/salmon;salmhome.htm>. Accessed 01/30/2007.

Table 26.—Alaska state hatchery FY 2006 operating budgets, in thousands of dollars.

| Hatchery | FY2006 | FY2006 |
|------------------------------------|------------------|----------------|
| | Authorized Total | Actual Total |
| Elmendorf Hatchery | \$656,800.00 | \$779,613.00 |
| Ft. Richardson Hatchery | \$1,319,600.00 | \$1,328,071.00 |
| Crystal Lake Hatchery ^a | \$592,700.00 | \$591,408.00 |

^a Crystal Lake Hatchery was funded with \$192,700 from the Fish and Game Fund, \$200,000 from Dingle-Johnson Funds, and with \$200,000 from the Southern Southeast Regional Aquaculture Association.

Table 27.– Estimated pink salmon returns to Alaska hatcheries in 2006, including common property harvests, as reported by operators.

| Area/Operator/Location | Common Property Harvest | | | | | | Brood | Cost Recovery Harvest | Escapement | Total | |
|-----------------------------|-------------------------|------------|--------|-------|------------------------------|-------|---------|-----------------------|------------|--------|------------|
| | Seine | Gillnet | Troll | Sport | Personal Use/ Subsistence | Other | | | | | |
| Southeast | | | | | | | | | | | |
| AKI | Port Armstrong | 280,006 | | | | | 38,406 | 77,465 | 225,183 | 10,000 | 631,060 |
| SJC | Sitka | 18,657 | | | | | 17,782 | 1,416 | 3,605 | | 41,460 |
| NSRAA | Medvejie | | | | | | 650 | 925 | 572 | 1,200 | 3,347 |
| Southeast Totals | | 298,663 | 0 | 0 | 0 | 0 | 56,838 | 79,806 | 229,360 | 11,200 | 675,867 |
| Prince William Sound | | | | | | | | | | | |
| PWSAC | Armin F. Koernig | 2,391,723 | | | | | | 400,619 | 2,418,082 | | 5,210,424 |
| | Wally Noerenberg | 1,429,468 | 29,845 | | | | | 200,854 | 2,404,868 | | 4,065,035 |
| | Cannery Creek | 1,319,036 | | | | | | 369,066 | 1,226,946 | | 2,915,048 |
| VFDA | Solomon Gulch | 4,840,097 | | | 25,000 | | 157,061 | 191,164 | 3,775,539 | 70,721 | 9,059,582 |
| | Prince William Sound | 9,980,324 | | | 25,000 | 0 | | 1,161,703 | 9,825,435 | 70,721 | 21,250,089 |
| Cook Inlet | | | | | | | | | | | |
| PGHC | Port Graham | | 5,000 | | | | | 27,741 | 246,781 | 5,000 | 284,522 |
| Cook Inlet Totals | | 0 | 5,000 | | 0 | 0 | 0 | 27,741 | 246,781 | 5,000 | 284,522 |
| Kodiak | | | | | | | | | | | |
| KRAA | Kitoy Bay | 1,840,106 | | | | 1,123 | 105,748 | 216,068 | 2,318,003 | 10,000 | 4,491,048 |
| Kodiak Totals | | 1,840,106 | 0 | | 0 | 1,123 | 105,748 | 216,068 | 2,318,003 | 10,000 | 4,491,048 |
| Statewide Totals | | 12,119,093 | 34,845 | | 25,000 | 1,123 | | 1,485,318 | 12,619,579 | 96,921 | 26,701,526 |

Table 28.—Estimated chum salmon returns to Alaska hatcheries in 2006, including common property harvests, as reported by operators.

| Area/Operator/Location | Common Property Harvest | | | | | | Brood | Cost Recovery Harvest | Escapement | Total |
|-----------------------------|------------------------------------|------------------|------------------|----------------|------------------------------|--------------|----------------|-----------------------|------------------|-------------------|
| | Seine | Gillnet | Troll | Sport | Personal Use/ Subsistence | Other | | | | |
| Southeast | | | | | | | | | | |
| SSRAA | Whitman Lake | | | | | | | | | |
| | Nakat Inlet – summer | 375,400 | 130,150 | | | | | | | 505,550 |
| | Anita Bay -summer | 362,800 | 354,850 | 150 | | | | | | 717,800 |
| | Kendrick Bay – summer | 647,000 | 77,900 | | | | | | | 724,900 |
| | Neets Bay – summer | 162,800 | 179,800 | 10,000 | | | 73,305 | 79,595 | 908,400 | 1,413,900 |
| | Neets Bay – fall | 7,100 | 49,100 | 2,300 | | | 22,522 | 18,378 | 124,500 | 223,900 |
| | Nakat Inlet – fall | 8,600 | 30,200 | | | | | | | 38,800 |
| NSRAA | Medvejie | 1,105,493 | 643,127 | 139,291 | | | 8,224 | 38,361 | 331,849 | 7,606 |
| | Hidden Falls | 1,760,387 | 1,096 | | | | 29,537 | 104,562 | 289,497 | |
| | Haines projects | | 1,890 | | | | | 2,360 | | 1,472 |
| DIPAC | Sheep Creek | | | | | | | | | 0 |
| | Macaulay (was Gastineau) | 73,835 | 389,053 | | 2,700 | | 275,544 | 94,652 | 1,051,163 | |
| | Amalga | 78,940 | 354,592 | | | | | | 1,767,409 | |
| | Limestone Inlet | 6,862 | 79,794 | | | | | | | 86,656 |
| | Boat Harbor | 23,586 | 529,894 | | | | | | | 553,480 |
| KNFC | Gunnuk Creek | | | | | | | | | 0 |
| | Kake SHA | 31,553 | | 769 | 50 | 1,000 | 18,500 | 57,395 | | 1,000 |
| | Southeast Cove | 62,264 | | 292 | | | 1,630 | | 143,745 | |
| AKI | Port Armstrong | 1,512 | | | | | | 5,841 | 208 | |
| SJC | Sitka | 17,348 | 8,562 | 1,854 | | | 1,049 | 1,037 | 4,961 | |
| MIC | Tamgas Creek | 11,724 | 55,000 | | | | 10,500 | 6,273 | 10,500 | |
| | Southeast Totals | 4,737,204 | 2,885,008 | 154,656 | 2,750 | 1,000 | 440,811 | 408,454 | 4,632,232 | 10,078 |
| Prince William Sound | | | | | | | | | | |
| PWSAC | Wally Noerenberg | | | | | | | | | |
| | Lake Bay | 346,101 | 306,937 | | 1,000 | | | 195,041 | 830,489 | |
| | Port Chalmers | 440,415 | | | | | | | | 440,415 |
| | Sawmill Bay | 105,810 | | | | | | | 4,526 | 110,336 |
| | Prince William Sound Totals | 892,326 | 306,937 | 0 | 1,000 | 0 | 0 | 195,041 | 835,015 | 0 |
| Kodiak | | | | | | | | | | |
| KRAA | Kitoi Bay | 176,051 | | | | | 72 | 9,018 | 25,488 | 1,497 |
| | Kodiak Totals | 176,051 | 0 | 0 | 0 | 72 | 9,018 | 25,488 | 1,497 | 400 |
| | Statewide Totals | 5,805,581 | 3,191,945 | 154,656 | 3,750 | 1,072 | 628,983 | 5,468,744 | 10,478 | 15,715,038 |

Table 29.—Estimated coho salmon returns to Alaska hatcheries in 2006, including common property harvests, as reported by operators.

| Area/Operator/Location | | Common Property Harvest | | | | | | | Escapement | Total |
|------------------------|-----------------------------|-------------------------|---------|---------|---------|------------------------------|--------|--------|------------|---------|
| | | Seine | Gillnet | Troll | Sport | Personal Use/ Subsistence | Other | Brood | | |
| Southeast | | | | | | | | | | |
| SSRAA | Whitman Lake | 390 | 2,476 | 6,330 | 604 | | 682 | 1,492 | | 11,974 |
| | Anita Bay | 2,100 | 13,319 | 8,942 | 436 | | | | | 24,797 |
| | Nakat | 71 | 8,243 | 7,764 | 435 | | | | | 16,513 |
| | Neets Bay | 887 | 12,190 | 40,563 | 5,691 | | 300 | 2,000 | 6,900 | 68,531 |
| | Burnett Inlet | | 894 | 241 | 90 | | 1,570 | 1,594 | | 4,389 |
| | Neck Lake | 27 | 4,903 | 1,635 | 5,000 | | 4,980 | | 20,045 | 36,590 |
| | Crystal Lake Hatchery | 801 | | 1,374 | 86 | | 1,591 | 180 | | 4,032 |
| NSRAA | Medvejie | | | 323 | 101 | | 120 | 80 | | 624 |
| | Deer Lake | 6,042 | | 38,933 | 1,818 | | 3,437 | | 37,658 | 87,888 |
| | Shamrock Cove | | | 5,488 | 550 | | 400 | | | 6,438 |
| | Hidden Falls | 1,239 | 596 | 70,290 | 4,501 | | 6,572 | 2,949 | 140,135 | 226,282 |
| AKI | Port Armstrong | | | 15,434 | | | 1,722 | 3,013 | 17,735 | 37,904 |
| KNFC | Gunnuk Creek | 39 | 141 | 70 | 35 | | 100 | 35 | | 538 |
| DIPAC | Macaulay (was Gastineau) | 3 | 2,455 | 8,252 | 2,762 | | 1,188 | 479 | 13,187 | 28,326 |
| KTHC | Deer Mountain | 369 | 530 | 140 | 333 | | 841 | 1,262 | | 3,800 |
| SJC | Sitka | | | 3,131 | | | 3,744 | 80 | 2 | 6,957 |
| POWHA | Klawock Hatchery | 375 | | 12,943 | 435 | | 4,826 | 4,570 | 7,013 | 6,008 |
| MIC | Tamgas Creek | 5,000 | 25,000 | 7,882 | 125 | | 5,200 | 1,227 | 4,500 | 48,934 |
| | Southeast Totals | 17,343 | 70,747 | 229,735 | 23,002 | 0 | 37,273 | 18,961 | 247,175 | 6,451 |
| Prince William Sound | | | | | | | | | | |
| PWSAC | Wally Noerenberg | 16,995 | 97,002 | | 2,500 | | 15,000 | 2,079 | | 133,576 |
| | Cordova/Whittier/Chenega | | | | 43,925 | | | | | 43,925 |
| VFDA | Solomon Gulch | 210,382 | | | 66,000 | | 754 | 1,360 | 16,172 | 341 |
| | Prince William Sound Totals | 227,377 | 97,002 | 0 | 112,425 | 0 | 15,754 | 3,439 | 16,172 | 341 |
| Cook Inlet | | | | | | | | | | |
| CIAA | Trail Lakes | | | | | | | 604 | 1,511 | 2,042 |
| ADF&G | Ship Creek Complex | | | | 12,441 | | | 545 | | 1,431 |
| | Bird Creek | | | | 4,865 | | | | | 442 |
| | Homer Spit | | | | 14,603 | | | | | |
| | Resurrection Bay | | | | 33,375 | | | 150 | | |
| | Campbell Creek | | | | 1,047 | | | 38 | | 434 |
| | Eklutna tailrace | | | | 4,717 | | | 80 | | |
| | Cook Inlet Totals | 0 | 0 | 0 | 71,048 | 0 | 0 | 1,417 | 1,511 | 4,349 |
| Kodiak | | | | | | | | | | |
| KRAA | Kitoi Bay | 152,143 | | | 400 | 716 | 3,970 | 1,713 | 16,062 | |
| | Pillar Creek- road system | | | | 1,600 | | | | | 1,600 |
| | Kodiak Totals | 152,143 | 0 | 0 | 2,000 | 716 | 3,970 | 1,713 | 16,062 | 0 |
| | Statewide Totals | 396,863 | 167,749 | 229,735 | 208,475 | 716 | 56,997 | 25,530 | 280,920 | 11,141 |

Table 30.—Estimated Chinook salmon returns to Alaska hatcheries in 2006, including common property harvests, as reported by operators.

| Area/Operator/Location | | Common Property Harvest | | | | | | Brood | Cost Recovery Harvest | Escapement | Total |
|-----------------------------|------------------------------------|-------------------------|--------------|---------------|---------------|------------------------------|--------------|---------------|-----------------------|--------------|----------------|
| | | Seine | Gillnet | Troll | Sport | Personal Use/ Subsistence | Other | | | | |
| Southeast | | | | | | | | | | | |
| SSRAA | Whitman Lake | 180 | 331 | 2,897 | 1,671 | | 3,364 | 564 | 3,668 | 200 | 12,875 |
| | Long Lake | 59 | 57 | 135 | 60 | | | | | | 311 |
| ADF&G | Crystal Lake Hatchery | 110 | 800 | 1,555 | 4,490 | | | 2,380 | | | 9,335 |
| | Anita Bay | 4,900 | 5,510 | 2,190 | 770 | | | | 6,060 | | 13,370 |
| | Neets Bay | 940 | 920 | 3,340 | 970 | | | | | | 12,230 |
| NSRAA | Medvejie | 409 | 669 | 2,583 | 920 | | 1,478 | 1,756 | 3,325 | | 11,140 |
| | Hidden Falls | 3,530 | 108 | 2,604 | 532 | | 1,663 | 687 | 1,229 | 50 | 10,403 |
| AKI | Port Armstrong | | | 587 | | | 70 | 855 | 304 | | 1,816 |
| DIPAC | Macaulay (was Gastineau) | 55 | 488 | 389 | 1,060 | | 163 | 154 | 193 | | 2,502 |
| | Skagway Site | 189 | 37 | 5 | 283 | | 9 | 36 | | | 559 |
| KTHC | Deer Mountain Hatchery | 15 | 26 | 83 | 409 | | 11 | 65 | | 77 | 686 |
| SJC | Sitka | | | 10 | | | 5 | 19 | | | 34 |
| MIC | Tamgas Creek | 499 | 300 | 847 | 231 | | 1,914 | 87 | 1,714 | | 5,592 |
| NOAA | Little Port Walter | 203 | 87 | 3,442 | | | | 2,900 | | | 6,632 |
| | Southeast Totals | 11,089 | 9,333 | 20,667 | 11,396 | 0 | 8,677 | 9,503 | 16,493 | 327 | 87,485 |
| Prince William Sound | | | | | | | | | | | |
| ADF&G | Ship Creek Complex | | | | 2,075 | | | | | | 2,075 |
| | Prince William Sound Totals | 0 | 0 | 0 | 2,075 | 0 | 0 | 0 | 0 | 0 | 2,075 |
| Cook Inlet | | | | | | | | | | | |
| ADF&G | Ship Creek Complex | | | | | | | | | | |
| | Resurrection Bay | | | | 2,835 | | | | | | 2,835 |
| | Kachemak Bay | | 623 | | 3,200 | | | | | | 3,823 |
| | Ship Creek | | | | 3,406 | | | 294 | | 1,431 | 5,131 |
| | Crooked Creek | | | | 2,358 | | | 57 | | 1,052 | 3,467 |
| | Ninilchik River | | | | 376 | | | 204 | | 204 | 784 |
| | Eklutna tailrace | | | | 670 | | | | | | 670 |
| | Deception Creek | | | | 1,499 | | | 110 | | 1,372 | 2,981 |
| | Cook Inlet Totals | 0 | 623 | 0 | 14,344 | 0 | 0 | 665 | 0 | 4,059 | 19,691 |
| Kodiak | | | | | | | | | | | |
| KRAA | Pillar Creek | | | | 270 | 7 | | 123 | | | 400 |
| | Kodiak Totals | 0 | 0 | 0 | 270 | 7 | 0 | 123 | 0 | 0 | 400 |
| | Statewide Totals | 11,089 | 9,956 | 20,667 | 28,085 | 7 | 8,677 | 10,291 | 16,493 | 4,386 | 109,651 |

Table 31.—Estimated sockeye salmon returns to Alaska hatcheries in 2006, including common property harvests, as reported by operators.

| Area/Operator/Location | Common Property Harvest | | | | | Personal Use/ Subsistence | Other | Brood | Cost Recovery Harvest | Escapement | Total |
|-----------------------------|----------------------------|---------|-----------|-------|--------|------------------------------|--------|--------|--------------------------|------------|-----------|
| | Seine | Gillnet | Troll | Sport | | | | | | | |
| Southeast | | | | | | | | | | | |
| SSRAA | Burnett Inlet | | | | | | 11 | | | | 11 |
| | Neck Lake | | | 33 | | | 38 | 47 | | | 118 |
| | Hugh Smith Lake | | | | 5,100 | | | | | 42,112 | 47,212 |
| POWHA | Klawock Hatchery | | | | | | 2,156 | | | 12,715 | 14,871 |
| DIPAC | Snettisham | 14,191 | 179,318 | | | 266 | 5,834 | 6,146 | 127,383 | | 333,138 |
| | Sweetheart Lake | 684 | 3,323 | | | 3,796 | | | | | 7,803 |
| | Stikine River ¹ | | 41,886 | | | 180 | 55,016 | | | 36,664 | 133,746 |
| | Taku River | | 2,205 | | | 24 | 678 | | | 2,491 | 5,398 |
| MIC | Tamgas Creek | 250 | 1,000 | | | | 250 | 81 | 250 | | 1,831 |
| Southeast Totals | | 15,125 | 232,832 | 0 | 33 | 4,266 | 63,983 | 6,274 | 127,633 | 93,982 | 544,128 |
| Prince William Sound | | | | | | | | | | | |
| PWSAC | Main Bay | 29,669 | 639,111 | | 500 | | | 15,854 | 350,742 | | 1,035,876 |
| | Gulkana I and II | | | | | | | | | | |
| | Paxson Lake | | 65,476 | | 545 | 4,229 | | 24,703 | | 3,050 | 98,003 |
| | Crosswind Lake | | 90,030 | | 750 | 5,815 | | | | 67,008 | 163,603 |
| | Summit Lake | | 8,185 | | 68 | 650 | | | | 2,431 | 11,334 |
| Prince William Sound Totals | | 29,669 | 802,802 | | 1,863 | 10,694 | 0 | 40,557 | 350,742 | 72,489 | 1,308,816 |
| Cook Inlet | | | | | | | | | | | |
| CIAA | Trail Lakes–Bear Creek | 27,793 | | | | | 4 | 4,060 | 34,655 | 8,338 | 74,850 |
| | Big Lake | | 3,637 | | 100 | | 247 | 5,850 | | 26,712 | 36,546 |
| | Hidden Lake | | 21,049 | | 4,030 | 3,720 | 92 | 4,690 | | 33,852 | 67,433 |
| | Leisure/Hazel Lakes | | | | | 5,550 | 820 | | 18,921 | | 25,291 |
| | Tustumena Lake | | 1,211,408 | | 5,500 | 75,000 | | | | 366,592 | 1,658,500 |
| | Kirschner Lake | 24,130 | | | | | | | 26,130 | | 50,260 |
| Cook Inlet Totals | | 51,923 | 1,236,094 | | 9,630 | 84,270 | 1,163 | 14,600 | 79,706 | 435,494 | 1,912,880 |
| Kodiak | | | | | | | | | | | |
| KRAA | Kitoi Bay | 23,822 | | | 130 | 141 | | | 1,317 | 4,000 | 29,410 |
| | Pillar Creek | | | | | | | | | | |
| | Spiridon Lake | 54,745 | 34,199 | | | | | | | | 88,944 |
| | Foul Bay | 819 | | | | | | | | | 819 |
| | Waterfall Bay | | | | | | | | | 300 | 300 |
| Kodiak Totals | | 79,386 | 34,199 | | 130 | 141 | 0 | 0 | 1,317 | 4,300 | 119,473 |
| Statewide Totals | | 176,103 | 2,305,927 | 0 | 11,656 | 99,371 | 65,146 | 61,431 | 559,398 | 606,265 | 3,885,297 |

¹“Other” is Canadian harvest.

Table 32.—Estimated “other” enhanced returns to Alaska hatcheries in 2006, including common property harvests, as reported by operators.

| Area/Operator/Location | | Species | Commercial | Sport Catch | Personal Use/ Subsistence | Other | Brood | Cost Recovery Harvest | Escapement | Total |
|------------------------|-----------------------------|-------------------|------------|-------------|------------------------------|-------|-------|--------------------------|------------|---------|
| Southeast | | | | | | | | | | |
| DMTH | Deer Mountain | Steelhead | | | | | 5 | | 18 | 23 |
| NMFS | Little Port Walter | Steelhead | | | | | 643 | | | 643 |
| Southeast Totals | | | 0 | 0 | 0 | 0 | 648 | 0 | 18 | 666 |
| Cook Inlet | | | | | | | | | | |
| ADF&G | Ship Creek Hatchery Complex | Arctic char | | 6,575 | | | 100 | | | 6,675 |
| | | Arctic grayling | | 2,615 | | | 205 | | | 2,820 |
| | | Landlocked salmon | | 24,525 | | | | | | 24,525 |
| | | Rainbow trout | | 67,746 | | | 1,194 | | | 68,940 |
| Cook Inlet Totals | | | 0 | 101,461 | 0 | 0 | 1,499 | 0 | 0 | 102,960 |
| Statewide Totals | | | 0 | 101,461 | 0 | 0 | 2,147 | 0 | 18 | 103,626 |

Table 33.—Summary of salmon production in 2006 from Fish Resource Permits issued by the Alaska Department of Fish and Game.

| Area/Permittee | Species | Maximum number to be released |
|------------------------------------------------|--------------|-------------------------------|
| Southeast | | |
| Juneau Center for Fisheries and Ocean Sciences | PINK | 50,000 |
| Juneau Douglas High School | COHO | 2 spawning pairs |
| Petersburg High School | PINK | 50,000 |
| Fawn Mountain Elementary (Ketchikan) | COHO | 100 |
| Hyder School | CHUM or COHO | No permit |
| Yakutat School | COHO | 250 |
| Southcentral | | |
| Abbott Loop Elementary (Anchorage) | COHO | 500 |
| Alpenglow Elementary (Eagle River) | COHO | 500 |
| Aquarian Charter (Anchorage) | COHO | 500 |
| Bartlett High School | COHO | 500 |
| Baxter Elementary School (Anchorage) | COHO | 500 |
| Bayshore Elementary (Anchorage) | COHO | 500 |
| Bear Valley Elementary | COHO | 500 |
| Big Lake Elementary (Big Lake) | COHO | 500 |
| Bowman Elementary | COHO | 500 |
| Campbell Elementary | COHO | 500 |
| Central Middle School | COHO | 500 |
| Chinook Elementary | COHO | 500 |
| Chugach Optional | COHO | 500 |
| Chugiak Elementary | COHO | 500 |
| Clark Middle School (Anchorage) | COHO | 500 |
| Chapman School (Anchor Point) | COHO | 500 |
| College Gate Elementary (Anchorage) | COHO | 500 |
| Cook Inlet Academy (Soldotna) | COHO | 500 |
| Cottonwood Creek Elementary | COHO | 500 |
| Creekside Park Elementary | COHO | 500 |
| Denali Elementary (Anchorage) | COHO | 500 |
| Eagle Academy | COHO | 500 |
| Eagle River Elementary | COHO | 500 |
| Fairview Elementary (Anchorage) | COHO | 500 |
| Finger Lake Elementary (Palmer) | COHO | 500 |
| Girdwood Junior High | COHO | 500 |
| Gladys Wood Elementary (Anchorage) | COHO | 500 |
| Goldenview Middle School | COHO | 500 |
| Goose Bay Elementary (Palmer) | COHO | 500 |
| Grace Christian | COHO | 500 |
| Gruening Middle School | COHO | 500 |
| Hanshew Middle School | COHO | 500 |
| Herman Hutchens Elementary (Valdez) | Chum | 500 |
| Homer Flex High School (Homer) | COHO | 500 |
| Homer High School | COHO | 500 |

-continued-

Table 33–Page 2 of 3.

| Area/Permittee | Species | Maximum number to be released |
|-----------------------------------------|---------|-------------------------------|
| Homestead Elementary (Eagle River) | COHO | 500 |
| Houston High School | COHO | 500 |
| Huffman Elementary (Anchorage) | COHO | 500 |
| Inlet View Elementary (Anchorage) | COHO | 500 |
| Kalifornsky Beach Elementary (Soldotna) | COHO | 500 |
| Kasuun Elementary (Anchorage) | COHO | 500 |
| Kenny Lake School (Kenny Lake) | COHO | 500 |
| Kincaid Elementary | COHO | 500 |
| King Career Center (Anchorage) | COHO | 500 |
| Klatt Elementary (Anchorage) | COHO | 500 |
| Lake Hood Elementary (Anchorage) | COHO | 500 |
| Lake Otis Elementary | COHO | 500 |
| Southcentral | | |
| Mears Middle School | COHO | 500 |
| Midnight Sun School (Wasilla) | COHO | 500 |
| Mirror Lake Middle School (Chugiak) | COHO | 500 |
| Mt. Spurr Elementary | COHO | 500 |
| Mt. View Elementary (Kenai) | COHO | 500 |
| Muldoon Elementary | COHO | 500 |
| Nikiski/North Star Elementary | COHO | 500 |
| Ninilchik School | COHO | 500 |
| North Star RTC | COHO | 500 |
| Northern Lights ABC (Anchorage) | COHO | 500 |
| Nunaka Valley Elementary (Anchorage) | COHO | 500 |
| Ocean View Elementary (Anchorage) | COHO | 500 |
| O'Malley School (Anchorage) | COHO | 500 |
| Pacific Northern Academy | COHO | 500 |
| Pioneer Peak Elementary School (Palmer) | COHO | 500 |
| Rabbit Creek Elementary (Anchorage) | COHO | 500 |
| Ravenwood Elementary | COHO | 500 |
| Redoubt Elementary (Soldotna) | COHO | 500 |
| Rogers Park Elementary (Anchorage) | COHO | 500 |
| SAVE High School (Anchorage) | COHO | 500 |
| Sears Elementary (Kenai) | COHO | 500 |
| Service High School | COHO | 500 |
| Sherrod Elementary (Palmer) | COHO | 500 |
| Skyview Elementary | COHO | 500 |
| Soldotna High School | COHO | 500 |
| South High School | COHO | 500 |
| Spring Hill Elementary | COHO | 500 |
| Susitna Elementary (Anchorage) | COHO | 500 |
| Susan B. English (Seldovia) | COHO | 500 |
| Susitna Valley High School | COHO | 500 |
| Sutton Elementary (Sutton) | COHO | 500 |
| Swanson Elementary (Palmer) | COHO | 500 |
| Taku Elementary (Anchorage) | COHO | 500 |

-continued-

Table 33.–Page 3 of 3.

| Area/Permittee | Species | Maximum number to be released |
|----------------------------------------------|---------|-------------------------------|
| Talkeetna Elementary | COHO | 500 |
| Tanaina Elementary (Wasilla) | COHO | 500 |
| Trailside Elementary School (Eagle River) | COHO | 500 |
| Tudor Elementary (Anchorage) | COHO | 500 |
| Tustumena Elementary (Kasilof) | COHO | 500 |
| Ursa Minor Elementary | COHO | 500 |
| Voznesenka School (Fritz Cove) | COHO | 500 |
| Wasilla High School | COHO | 500 |
| West Homer Elementary | COHO | 500 |
| Williwaw Elementary | COHO | 500 |
| Interior | | |
| Arctic Light Elementary (Ft. Wainright) | COHO | 500 |
| Badger Road Elementary (Fairbanks) | COHO | 500 |
| Ben Eielson Jr.Sr. High School (Eielson AFB) | COHO | 500 |
| Delta Junction Elementary | COHO | 500 |
| Joy Elementary (Fairbanks) | COHO | 500 |
| Ladd Elementary | COHO | 500 |
| Nordale Elementary (Fairbanks) | COHO | 500 |
| Pearl Creek Elementary (Fairbanks) | COHO | 500 |
| Salcha Elementary | COHO | 500 |
| Tok School | COHO | 500 |
| Tri-Valley School (Healy) | COHO | 500 |
| Weller Elementary (Fairbanks) | COHO | 500 |
| Whitestone School | COHO | 500 |
| Woodriver Elementary (Fairbanks) | COHO | 500 |
| Western | | |
| Akhiok School | COHO | 500 |
| East Elementary School (Kodiak) | COHO | 500 |
| Karluk School | COHO | 500 |
| Kodiak Christian School | COHO | 500 |
| Kodiak High School | COHO | 500 |
| Kodiak Learning Center | COHO | 500 |
| Larsen Bay School | COHO | 500 |
| Main Elementary (Kodiak) | COHO | 500 |
| North Star Elementary (Kodiak) | COHO | 500 |
| Old Harbor School | COHO | 500 |
| Ouzinkie School | COHO | 500 |
| Peterson Elementary School (Kodiak) | COHO | 500 |
| Port Lions School | COHO | 500 |
| St. Mary's School | COHO | 500 |
| Unalaska City School District | COHO | 25,000 |
| Arctic-Yukon-Kuskokwim | | |
| Aleknagik School | COHO | 500 |
| DRKM School (Kongiganak) | COHO | 500 |
| Igiugig School | COHO | 500 |
| Jimmy Huntington School | CHUM | 250 |
| Napaaqtuamiut School (Noatak) | COHO | 500 |

Table 34.—Updated pink salmon returns to Alaska hatcheries in 2005, including common property harvest, as reported by operators.

| Area/Operator/Location | Common Property Harvest | | | | | | | Brood | Cost Recovery Harvest | Escapement | Total |
|------------------------------------|-------------------------|-------------------|---------------|----------|------------------------------|--------------|----------------|------------------|--------------------------|----------------|-------------------|
| | Seine | Gillnet | Troll | Sport | Personal Use/ Subsistence | Other | | | | | |
| Southeast | | | | | | | | | | | |
| AKI | Port Armstrong | 771,627 | | | | | | 178,582 | 810,617 | 26,100 | 1,786,926 |
| SJC | Sitka | | | | | | 333 | 1,123 | | | 1,456 |
| Southeast Totals | | 771,627 | 0 | 0 | 0 | 0 | 333 | 179,705 | 810,617 | 26,100 | 1,788,382 |
| Prince William Sound | | | | | | | | | | | |
| PWSAC | Armin F. Koernig | 6,429,875 | | | | | | 793,048 | 2,894,215 | | 10,117,138 |
| | Wally Noerenberg | 4,455,887 | 59,592 | | 100 | | | 1,043,736 | 3,604,839 | | 9,164,154 |
| | Cannery Creek | 10,452,306 | | | | | | 590,559 | 2,448,805 | | 13,491,670 |
| VFDA | Solomon Gulch | 13,713,349 | | | 25,000 | | 491,439 | 224,969 | 3,561,805 | 118,788 | 18,135,350 |
| Prince William Sound Totals | | 35,051,417 | 59,592 | 0 | 25,100 | 0 | 491,439 | 2,652,312 | 12,509,664 | 118,788 | 50,908,312 |
| Cook Inlet | | | | | | | | | | | |
| PGHC | Port Graham | | | | | | | 84,088 | 506,732 | 5,000 | 595,820 |
| CIAA | Tutka | 4,779 | | | | | | | 1,631,806 | 133,600 | 1,770,185 |
| Cook Inlet Totals | | 4,779 | 0 | 0 | 0 | 0 | 0 | 84,088 | 2,138,538 | 138,600 | 2,366,005 |
| Kodiak | | | | | | | | | | | |
| KRAA | Kitoi Bay | 10,963,488 | | | | 4,350 | | 400,469 | 2,640,254 | 5,000 | 14,013,561 |
| Kodiak Totals | | 10,963,488 | | | | 4,350 | | 400,469 | 2,640,254 | 5,000 | 14,013,561 |
| Statewide Totals | | 46,791,311 | 59,592 | 0 | 25,100 | 4,350 | 491,772 | 3,316,574 | 18,099,073 | 288,488 | 69,076,260 |

Table 35.—Updated chum salmon returns to Alaska hatcheries in 2005, including common property harvests, as reported by operators.

| Area/Operator/Location | Common Property Harvest | | | | | | | Cost Recovery Harvest | Escapement | Total |
|-----------------------------|-------------------------|-----------|-----------|---------|--------------------------|-------|---------|-----------------------|------------|-----------------|
| | Seine | Gillnet | Troll | Sport | Personal Use/Subsistence | Other | Brood | | | |
| Southeast | | | | | | | | | | |
| SSRAA | Whitman Lake | | | | | | | | | |
| | Nakat Inlet (summer) | 189,800 | 49,729 | | | | | | | 239,529 |
| | Anita Bay (summer) | 90,735 | 139,359 | | | | | | | 230,094 |
| | Kendrick Bay (summer) | 118,832 | 12,211 | 9,428 | | | | | | 140,471 |
| | Neets Bay (summer) | 62,400 | 58,400 | 6,700 | | | 16,365 | 90,518 | 604,838 | 839,221 |
| | Neets Bay (fall) | 42,900 | 14,600 | 21 | | | | 13,490 | 86,314 | 157,325 |
| | Nakat Inlet (fall) | 6,800 | 41,500 | | | | | | | 48,300 |
| NSRAA | Medvejie | 564,171 | 430,655 | 165,046 | | | 14,448 | 36,708 | 513,044 | 1,240 1,725,312 |
| | Hidden Falls | 342,255 | | 3 | | | 21,550 | 112,581 | 330,172 | 806,561 |
| | Haines projects | | 2,023 | | | | | 1,108 | | 1,927 5,058 |
| DIPAC | Macaulay (Gastineau) | 9,924 | 72,458 | | 1,800 | | 102,642 | 88,818 | 32,966 | 308,608 |
| | Amalga | 34,982 | 78,962 | | | | | | 246,405 | 360,349 |
| | Limestone Inlet | 1,827 | 25,045 | | | | | | | 26,872 |
| | Boat Harbor | 2,547 | 125,279 | | | | | | | 127,826 |
| KNFC | Gunnuk Creek | 16,527 | | 425 | | | 5,750 | 35,533 | | 1,000 59,235 |
| | Southeast Cove | 26,100 | | 66 | | | 800 | 189 | 78,036 | 105,191 |
| SJC | Sitka | 9,117 | | | | | 8,689 | 427 | | 18,233 |
| MIC | Tamgas Creek | 6,000 | 13,350 | | | | 3,782 | 5,536 | 1,000 | 29,668 |
| Southeast Totals | | 1,524,917 | 1,063,571 | 181,689 | 1,800 | 0 | 174,026 | 384,908 | 1,892,775 | 4,167 5,227,853 |
| Prince William Sound | | | | | | | | | | |
| PWSAC | Wally Noerenberg | | | | | | | | | |
| | Pt. Chalmers | 272,309 | 873,845 | | 500 | | | 280,811 | 535,783 | 1,963,248 |
| | Sawmill Bay | 235,162 | | | | | | | | 235,162 |
| | | 1,971 | | | | | | | | 1,971 |
| Prince William Sound Totals | | 509,442 | 873,845 | 0 | 500 | 0 | 0 | 280,811 | 535,783 | 0 2,200,381 |
| Kodiak | | | | | | | | | | |
| KRAA | Kitoi Bay | | | | | | | | | |
| | Kodiak Totals | 91,814 | 0 | 0 | 0 | 0 | 0 | 33,145 | 0 | 0 124,959 |
| Statewide Totals | | 2,126,173 | 1,937,416 | 181,689 | 2,300 | 0 | 174,026 | 698,864 | 2,428,558 | 4,167 7,553,193 |

Table 36.—Updated coho salmon returns to Alaska hatcheries in 2005, including common property harvests, as reported by operators.

| Area/Operator/Location | Common Property Harvest | | | | | | Other | Cost Recovery | | | Total |
|-----------------------------|---------------------------|---------|---------|---------|------------------------------|-------|--------|---------------|------------|---------|-----------|
| | Seine | Gillnet | Troll | Sport | Personal Use/ Subsistence | Brood | | Harvest | Escapement | | |
| Southeast | | | | | | | | | | | |
| SSRAA | Whitman Lake | 377 | 1,019 | 5,349 | 840 | | 557 | 1,858 | | 10,000 | |
| | Anita Bay | 350 | 8,067 | 6,402 | 311 | | | | | 15,130 | |
| | Nakat | 617 | 5,631 | 6,748 | 856 | | | | | 13,852 | |
| | Neets Bay | 9,400 | 30,000 | 64,200 | 12,800 | | 3,020 | 980 | 4,200 | 124,600 | |
| | Burnett Inlet | 100 | 1,100 | 200 | 300 | | 1,123 | 1,377 | | 4,200 | |
| | Neck Lake | | 9,500 | 400 | 3,000 | | 1,099 | | 26,181 | 40,180 | |
| | Crystal Lake Hatchery | 300 | 900 | 3,000 | 300 | | 2,720 | 180 | | 7,400 | |
| NSRAA | Medvejie | | | 319 | 191 | | | 149 | | 679 | |
| | Deer Lake | 3,579 | | 56,224 | 1,930 | | 2,028 | | 69,618 | 133,379 | |
| | Deep Inlet | 31 | | 409 | 270 | | 250 | | | 960 | |
| | Shamrock Cove | | 81 | 13,825 | 5,502 | | 500 | | | 19,908 | |
| | Hidden Falls | 20,307 | 222 | 61,908 | 6,577 | | 22,629 | 3,688 | 84,523 | 201,354 | |
| AKI | Port Armstrong | | | 12,957 | | | 2,576 | 3,457 | 454 | 19,444 | |
| KNFC | Gunnuk Creek | 35 | 126 | 62 | | | 15 | 30 | | 438 | |
| DIPAC | Macaulay (Gastineau) | 1,643 | 639 | 11,437 | 4,179 | | 2,224 | 471 | 20,019 | 40,612 | |
| KTHC | Deer Mountain | 1,187 | 1,205 | 518 | 1,148 | | 814 | 320 | | 6,454 | |
| SJC | Sitka | | | 42 | | | 15 | 37 | | 94 | |
| POWHA | Klawock Hatchery | 14,703 | | 47,035 | 10,500 | | 4,876 | 4,422 | 37,657 | 128,060 | |
| MIC | Tamgas Creek | 6,369 | 33,983 | 40,153 | 1,889 | 600 | | 1,705 | 12,000 | 96,699 | |
| Southeast Totals | | 58,998 | 92,473 | 331,188 | 50,593 | 600 | 44,446 | 18,674 | 254,652 | 11,819 | 863,443 |
| Prince William Sound | | | | | | | | | | | |
| PWSAC | Wally Noerenberg | 1,537 | 51,720 | | 1,500 | | 5,000 | 6,450 | 19 | 66,226 | |
| | Cordova/Whittier/Chenega | | | | 21,173 | | | | | 21,173 | |
| VFDA | Solomon Gulch | 129,966 | | | 66,000 | | 277 | 1,048 | 44,402 | 777 | 242,470 |
| Prince William Sound Totals | | 131,503 | 51,720 | | 88,673 | | 5,277 | 7,498 | 44,421 | 777 | 329,869 |
| Cook Inlet | | | | | | | | | | | |
| CIAA | Trail Lakes | | | | 4,788 | | 57 | 808 | 1,536 | 546 | 7,735 |
| ADF&G | Ship Creek Complex | | | | 6,830 | | | 508 | | 364 | 7,702 |
| | Bird Creek | | | | 3,305 | | | 619 | | | 3,924 |
| | Homer Spit | | | | 15,075 | | | | | | 15,075 |
| | Resurrection Bay | | | | 42,116 | | | 145 | | | 42,261 |
| | Campbell Creek | | | | 1,623 | | | 25 | | 922 | 2,570 |
| | Eklutna tailrace | | | | 4,899 | | | 84 | | | 4,983 |
| Cook Inlet Totals | | | | | 78,636 | | 57 | 2,189 | 1,536 | 1,832 | 84,250 |
| Kodiak | | | | | | | | | | | |
| KRAA | Kitoi Bay | 151,729 | | | 50 | 758 | 5,000 | 6,842 | | | 164,379 |
| | Pillar Creek- road system | | | | 1,600 | | | | | | 1,600 |
| Kodiak Totals | | 151,729 | | | 1,650 | 758 | 5,000 | 6,842 | 0 | 0 | 165,979 |
| Statewide Totals | | 342,230 | 144,193 | 331,188 | 219,552 | 1,358 | 54,780 | 35,203 | 300,609 | 14,428 | 1,443,541 |

Table 37.—Updated Chinook salmon returns to Alaska hatcheries in 2005, including common property harvests, as reported by operators.

| Region/Operator/Location | | Seine | Gillnet | Troll | Sport | Personal Use/ Subsistence | Other | Brood | Cost Recovery Harvest | Escapement | Total |
|-----------------------------|------------------------|-------|---------|--------|--------|------------------------------|--------|-------|--------------------------|------------|---------|
| Southeast | | | | | | | | | | | |
| SSRAA | Whitman Lake | 513 | 352 | 6,195 | 3,750 | | 2,228 | 971 | 4,306 | 150 | 18,465 |
| | Long Lake | 130 | | 330 | 110 | | | | 170 | | 740 |
| ADF&G | Crystal Lake Hatchery | | 650 | 1,870 | 4,170 | | | 1,887 | | | 8,577 |
| | Anita Bay | 50 | 1,430 | 1,410 | 50 | | | | | | 2,940 |
| | Neets Bay | 3,240 | 210 | 3,990 | 1,390 | | | | 5,230 | | 14,060 |
| NSRAA | Medvejie Creek | 1,473 | 1,110 | 10,376 | 1,950 | | 1,928 | 2,128 | 9,478 | 250 | 28,693 |
| | Hidden Falls | 2,244 | 367 | 4,418 | 723 | | 4,223 | 868 | 6,085 | 200 | 19,128 |
| AKI | Port Armstrong | | | 569 | | | 555 | 292 | 240 | | 1,656 |
| DIPAC | Gastineau | 7 | 898 | 983 | 2,456 | | 938 | 270 | 383 | | 5,935 |
| | Skagway Site | 13 | 149 | 11 | 651 | | 23 | 104 | | 129 | 1,080 |
| KTHC | Deer Mountain Hatchery | 32 | 43 | 433 | 574 | | 138 | 92 | | 150 | 1,462 |
| SJC | Sitka | | | 19 | | | 23 | | | | 42 |
| MIC | Tamgas Creek | 97 | 809 | 2,352 | 1,545 | 350 | | 175 | 4,835 | | 10,163 |
| NMFS | Little Port Walter | 66 | 101 | 2,760 | 256 | | 820 | 921 | | | 4,924 |
| Southeast Totals | | 7,865 | 6,119 | 35,716 | 17,625 | 350 | 10,876 | 7,708 | 30,727 | 879 | 117,865 |
| Prince William Sound | | | | | | | | | | | |
| ADF&G | Ship Creek Complex | | | | 2,415 | | | | | | 2,415 |
| Prince William Sound Totals | | 0 | 0 | | 2,415 | 0 | 0 | 0 | 0 | 0 | 2,415 |
| Cook Inlet | | | | | | | | | | | |
| ADF&G | Ship Creek Complex | | | | | | | | | | |
| | Resurrection Bay | | | | 2,768 | | | | | | 2,768 |
| | Kachemak Bay | | 626 | | 2,810 | | | | | | 3,436 |
| | Ship Creek | | | | 4,081 | | | 215 | | 1,485 | 5,781 |
| | Crooked Creek | | | | 1,475 | | | 110 | | 1,024 | 2,609 |
| | Ninilchik River | | | | | | | 210 | | 355 | 565 |
| | Eklutna Tailrace | | | | 941 | | | | | | 941 |
| | Deception Creek | | | | 981 | | | 100 | | 1,208 | 2,289 |
| Cook Inlet Totals | | 0 | 626 | | 13,056 | 0 | 0 | 635 | 0 | 4,072 | 18,389 |
| Kodiak | | | | | | | | | | | |
| KRAA | Pillar Creek | | | | 185 | | | 100 | | 95 | 380 |
| Kodiak Totals | | 0 | 0 | | 185 | 0 | 0 | 100 | 0 | 95 | 380 |
| Statewide Totals | | 7,865 | 6,745 | 35,716 | 33,281 | 350 | 10,876 | 8,443 | 30,727 | 5,046 | 139,049 |

Table 38.—Updated Sockeye salmon returns to Alaska hatcheries in 2005, including common property harvests, as reported by operators.

| Area/Operator/Location | Seine | Gillnet | Troll | Sport | Personal Use/ Subsistence | Other | Brood | Cost Recovery Harvest | Escapement | Total |
|------------------------------|---------|-----------|-------|--------|------------------------------|--------|--------|--------------------------|------------|-----------|
| Southeast | | | | | | | | | | |
| SSRAA Burnett Inlet | | | | | | | | | | |
| Neck Lake | 900 | 2,300 | | 200 | | 408 | 588 | 4 | | 4,400 |
| Hugh Smith Lake | 4,900 | 5,400 | | | | | | | 13,700 | 24,000 |
| POWHA Klawock Hatchery | | | | | | 2,394 | | | 12,509 | 14,903 |
| DIPAC Snettisham | 31,160 | 42,874 | | 1,145 | | 13,363 | 4,728 | 140,029 | | 233,299 |
| Sweetheart Lake | 1,670 | 2,956 | | | 1,000 | | | | | 5,626 |
| Stikine River | | 36,346 | | | | | | | | 36,346 |
| Taku River | | 530 | | | | | | | | 530 |
| NSRAA Haines projects | | 2,417 | | | | | | | 3,626 | 6,043 |
| MIC Tamgas Creek | 40 | 40 | | | | | | | | 80 |
| Southeast Totals | 38,670 | 92,863 | 0 | 1,345 | 1,000 | 16,165 | 5,316 | 140,033 | 29,835 | 325,227 |
| Prince William Sound | | | | | | | | | | |
| PWSAC Main Bay | 34,125 | 198,964 | | 750 | | | 44,366 | 188,904 | | 467,109 |
| Gulkana I and II | | | | | | | | | | |
| Paxson Lake | | 40,277 | | 916 | 35,491 | | 14,431 | | 2,090 | 93,205 |
| Crosswind Lake | | 52,743 | | 1,677 | 38,538 | | 5,429 | | 69,253 | 167,640 |
| Summit Lake | | 2,877 | | 57 | 1,542 | | | | 1,252 | 5,728 |
| Prince William Sound Totals | 34,125 | 294,861 | | 3,400 | 75,571 | 0 | 64,226 | 188,904 | 72,595 | 733,682 |
| Cook Inlet | | | | | | | | | | |
| CIAA Trail Lakes – Bear Lake | 19,018 | | | 500 | | 10 | 3,122 | 37,654 | 10,285 | 70,589 |
| Hidden Lake | | 28,467 | | 2,987 | 2,674 | | 2,093 | | 10,907 | 47,128 |
| Meadow Creek | | 7,711 | | | 102 | 170 | 2,164 | | 12,221 | 22,368 |
| Leisure/Hazel Lakes | 40,333 | | | 650 | 4,900 | 1 | | 22,050 | | 67,934 |
| Tustumena Lake | | 828,848 | | 8,000 | 78,356 | | | | 346,012 | 1,261,216 |
| Kirschner Lake | | | | | | | | 14,969 | | 14,969 |
| Cook Inlet Totals | 59,351 | 865,026 | | 12,137 | 86,032 | 181 | 7,379 | 74,673 | 379,425 | 1,484,204 |
| Kodiak | | | | | | | | | | |
| KRAA Kitoi Bay | 44,705 | | | 100 | 111 | | | | 1,000 | 45,916 |
| Pillar Creek | | | | | | | | | | |
| Settler's Cove | | | | | 1,124 | | | | | 1,124 |
| Spiridon Lake | 81,118 | 63,741 | | | | | | | | 144,859 |
| Foul Bay | 7,402 | | | | | | | | | 7,402 |
| Waterfall Bay | 18,270 | | | | | | | | | 18,270 |
| Kodiak Totals | 151,495 | 63,741 | | 100 | 1,235 | 0 | 0 | 0 | 1,000 | 217,571 |
| Statewide Totals | 283,641 | 1,316,491 | 0 | 16,982 | 163,838 | 16,346 | 76,921 | 403,610 | 482,855 | 2,760,684 |

Table 39.—Updated “other” enhanced fish returns to Alaska hatcheries in 2005, as reported by operators.

| | | Species | Commercial | Sport Catch | Personal Use/ Subsistence | Other | Brood | Cost Recovery Harvest | Escapement | Total |
|-------------------|--------------------|-------------------|------------|-------------|------------------------------|-------|-------|--------------------------|------------|--------|
| Southeast | | | | | | | | | | |
| DMTH | Deer Mountain | Steelhead | | | | | 9 | | 85 | 94 |
| NMFS | Little Port Walter | Steelhead | | | | | 243 | | | 243 |
| Southeast Totals | | | 0 | 0 | 0 | 0 | 252 | 0 | 85 | 337 |
| Cook Inlet | | | | | | | | | | |
| ADF&G | Ship Creek Complex | Arctic char | | 5,220 | | | 136 | | | 5,356 |
| | Statewide lakes | Arctic grayling | | 1,312 | | | 163 | | | 1,475 |
| | | Rainbow trout | | 48,287 | | | 2,538 | | | 50,825 |
| | | Landlocked Salmon | | 16,499 | | | | | | 16,499 |
| Cook Inlet Totals | | | 0 | 71,318 | 0 | 0 | 2,837 | 0 | 0 | 74,155 |
| Statewide Totals | | | 0 | 71,318 | 0 | 0 | 3,089 | 0 | 85 | 74,492 |

Table 40.—Actively operated Alaska hatcheries.

| Initials | Address | City, State, Zip | Office phone | Fax phone | Hatchery | Hatchery Manager | Director | Email |
|----------------------|-----------------------------------|--------------------------------------------|----------------------------------------------------------------------------------------|----------------------------------|-----------------------------------------------------------------------|------------------------------------------------------------------------|-----------------|------------------------------------------------------------------------------------------------------------------------------------------------------------------------------------------------------------------------------------------------------------------------------------------------------------------------------------------------------------|
| Southeast | | | | | | | | |
| R SSRAA | 14 Borch Street | Ketchikan, AK 99901 | (907) 225-9605 (907) 225-2635 (907) 247-8790 (907) 874-2525 (907) 772-4772 | (907) 225-1348 | Whitman Lake Neets Bay Burnett Inlet Crystal Lake* | Jay Creasy Mike Anderson Ron Parsely Loren Thompson | John Burke | johnb@ssraa.org whitman@kpunet.net neetsbay@starband.net burnettinlet@starband.net crystal.lake@starband.net |
| R NSRAA | 1308 Sawmill Cr. Rd | Sitka, AK 99835 | (907) 747-6850 | (907) 747-1470 | Medvejie Creek Hidden Falls* Haines Projects | Lon Garrison Scott Wagner Todd Buxton | Pete Esquiro | pete_esquiro@nsraa.org lon_garrison@nsraa.org scott_wagner@nsraa.org todd_buxton@nsraa.org |
| P DIPAC | 2697 Channel Dr. | Juneau, AK 99801 | (907) 463-5114 (907) 463-5114 (907) 463-5115 | (907) 463-3213 (907) 463-3213 | Macaulay Snettisham* | Steve Schick Kevin Steck | Eric Prestegard | Eric_prestegard@dipac.net steve_schick@dipac.net kevin_steck@dipac.net |
| P POWHA | PO Box 554 | Craig, AK 99921 | (907) 755-2231 | (907) 755-2440 | Prince of Wales* | John Bruns | John Bruns | powha@aptalaska.net |
| P SJC | 801 Lincoln St | Sitka, AK 99835 | (907) 747-5254 | (907) 747-2987 | Sheldon Jackson | Dan Goodness | | dgoodness@sj-alaska.edu |
| P KNFC | P.O. Box 523 | Take, AK 99830 | (907) 785-6460 | (907) 785-6475 | Gunnuk Creek | John Oliva | | gunnukcreek@starband.net |
| P BCF | P.O. Box 455 | Skagway, AK 99840 | (907) 983-2355 | | Burro Creek | Eugene Richards | Gene Richards | burrocreek@aptalaska.net |
| P AKI | P.O. Box 21990 | Juneau, AK 99802 | (907) 586-3443 (907) 586-2228 (907) 586-2228 | (907) 586-2236 (907) 586-2228 | Port Armstrong Deer Mountain | Ben Contag Jerry Guthrie | Sam Rabung | aki@ak.net portarmstrong@starband.net jguthrie@kictribe.com |
| F NMFS | P.O. Box 21990 | Juneau, AK 99802 | (907)789-6055 | (907)789-6094 | Little Port Walter | Frank Thrower | | Frank.Thrower@noaa.gov |
| F MIC | PO Box 8 | Metlakatla, AK 99929 | (907)886-3150 | (907)886-3152 | Tamgas Creek | Steve Leask | | stevel@aptalaska.net |
| Prince William Sound | | | | | | | | |
| R PWSAC | PO Box 1110 | Cordova, AK 99574 | (907) 424-7511 | (907) 424-7514 | AF Koernig W Noerenberg Main Bay* Gulkana* Cannery Creek* | Craig Perry Bill Lyden Rob Unger Gary Martinek Neil Wright | Dave Reggiani | dave.pwsac@ak.net afk.pwsac@ak.net wnh.pwsac@ak.net mbh.pwsac@ak.net gkh.pwsac@ak.net cch.pwsac@ak.net |
| P VFDA | PO Box 125 | Valdez, AK 99686 | (907) 835-4874 | (907) 835-5951 | Solomon Gulch | Ken Morgan | Jason Wells | vfdamike@alaska.com vfda@cvinternet.net |
| Cook Inlet | | | | | | | | |
| R CIAA | 40610 Kalifornsky Beach Rd | Kenai, AK 99611 | (907) 283-5761 | (907) 283-9433 | Trail Lakes* Tutka* | Robert Blankenship | Gary Fandrei | gfandrei@ciaanet.org rblankenship_tlh@ciaanet.org |
| P PGH | PO Box 5543 | Port Graham, AK 99603 | (907)284-2233 | (907)284-2238 | Port Graham | Ephim Ananonak | | pghatchery@starband.net |
| S ADFG | 941 N. Reeve Blvd. PO Box 5267 | Anchorage, AK 99501 Anchorage, AK 99505 | (907)274-0065 (907) 428-1348 | | Elmendorf Ft Richardson | Darrell Keifer Andrea Tesch | | darrell_keifer@fishgame.state.ak.us andrea_tesch@fishgame.state.ak.us |
| Kodiak | | | | | | | | |
| R KRAA | PO Box 3407 | Kodiak, AK 99615 | (907) 486-6555 (907) 486-4730 (907) 486-6559 | (907) 486-4105 | Pillar Creek* Kitoi Bay* | Gary Bryne Andrew Aro | Kevin Brennan | kraa@gci.net pch@gci.net kitoi@starband.net |

-continued-

Table 40. Page 2 of 2.

| Initials | Corporate name | Hatchery | Permit # | PNP permit issued | Species reared | Web Site |
|----------------------|------------------------------------------------|---------------------------------|----------|-------------------|-----------------------------------------------------|------------------------------------------------------------------------------------------------|
| Southeast | | | | | | |
| SSRAA | Southern Southeast Regional Aquaculture Assoc. | Whitman Lake | 8 | 3/9/78 | chum, coho, Chinook | www.ssraa.org |
| | | Neets Bay | 19 | 6/17/83 | chum, coho, Chinook | |
| | | Burnett Inlet | 40 | 9/30/97 | sockeye, coho | |
| | | Crystal Lake* | | | Chinook, coho | |
| NSRAA | Northern Southeast Regional Aquaculture Assoc. | Medvejie Creek | 16 | 8/17/81 | chum, coho, Chinook, pink | www.nsraa.org |
| | | Hidden Falls* | 28 | 6/22/88 | chum, Chinook, coho | |
| | | Haines Projects | 34 | 4/29/92 | chum, sockeye | |
| DIPAC | Douglas Island Pink and Chum, Inc | Sheep Creek | 11 | 9/19/79 | chum, pink, coho | www.dipac.net |
| | | Gastineau | 25 | 6/3/87 | chum, pink, coho, Chinook | |
| | | Snettisham* | 39 | 7/15/96 | sockeye | |
| POWHA | Prince of Wales Hatchery Association | Klawock River* | 38 | 2/19/96 | coho, sockeye, Chinook, steelhead | |
| SJC | Sheldon Jackson College | Sheldon Jackson | 3 | 4/29/75 | pink, chum, coho, Chinook, steelhead | |
| KNFC | Kake Nonprofit Fisheries Corporation | Gunnuk Creek | 7 | 4/1/77 | pink, chum, coho | http://gunnukcreekhatchery.org/ |
| BCF | Burro Creek Farms | Burro Creek | 12 | 5/23/80 | pink, chum, coho, Chinook | |
| AKI | Armstrong-Keta, Inc. | Port Armstrong | 13 | 2/23/81 | pink, chum, Chinook, coho | |
| KTHC | Ketchikan Tribal Hatchery Corporation | Deer Mountain | 37 | 6/22/94 | Chinook, coho, steelhead, rainbow | |
| NMFS | National Marine Fisheries Service | Little Port Walter | | | Chinook, pink, steelhead | |
| MIC | Tamgas Creek Hatchery | Tamgas Creek | | | chum, coho, Chinook, sockeye | |
| Prince William Sound | | | | | | |
| PWSAC | Prince William Sound Aquaculture Association | AF Koernig | 2 | 9/29/75 | pink | www.pwsac@ak.net |
| | | W Noerenberg | 20 | 6/17/83 | pink, chum, Chinook, coho | |
| | | Main Bay* | | | sockeye | |
| | | Gulkana* | | | sockeye | |
| | | Cannery Creek* | 26 | 6/22/88 | pink | |
| VFDA | Valdez Fisheries Development Association | Solomon Gulch | 15 | 6/26/81 | pink, coho, Chinook | |
| Cook Inlet | | | | | | |
| CIAA | Cook Inlet Aquaculture Association | Trail Lakes* | 27 | 6/22/88 | sockeye, coho, Chinook | www.ciaa.net |
| | | Tutka* | 32 | 1/3/94 | pink, sockeye | |
| PGH | Port Graham Hatchery Corporation | Port Graham | 33 | 8/3/92 | pink, sockeye, coho | |
| ADFG | Alaska Department of Fish and Game | Ship Creek Complex ^a | | | Chinook, coho, char, grayling, lake & rainbow trout | www.state.ak.us/adfg/adfghome.htm |
| Kodiak | | | | | | |
| KRAA | Kodiak Regional Aquaculture Association | Pillar Creek* | 41 | 5/1/98 | sockeye, coho, Chinook | www.ptialaska.net/~kraa07/index.html |
| | | Kitoi Bay* | 29 | 7/5/88 | pink, chum, coho, sockeye | |

Codes: R=Regional Aquaculture Association Private Nonprofit (PNP) hatcheries, P=Nonassociation PNP hatchery, F=Federal/BIA hatchery, S=State hatchery

*=State owned hatchery contracted to private sector.

^a Elmendorf and Fort Richardson hatcheries.

Table 41.—Permitted capacity of Alaskan private nonprofit hatcheries in 2006, in millions of eggs.

| Region/Operator/Location | | Combined | | | | | | Total |
|------------------------------------------------|---------------------------|-----------------|---------------|--------------|--------------|--------------|---------------|-----------------|
| | | Pink | Chum | Pink & Chum | Coho | Chinook | Sockeye | |
| Southeast | | | | | | | | |
| SSRAA | Whitman Lake | | 44.30 | | 3.40 | 1.50 | | 49.20 |
| | Neets Bay | | 84.00 | | 5.00 | 4.00 | | 93.00 |
| | Burnett Inlet | | | | 2.50 | | 2.70 | 5.20 |
| | Crystal Lake ^a | | | | | | | 0.00 |
| AAC | Bell Island | | | | 0.02 | 0.07 | 0.01 | 0.10 |
| NSRAA | Hidden Falls | | 101.00 | | 7.10 | 3.50 | | 111.60 |
| | Medvejie Creek | 0.30 | 55.00 | | 3.30 | 5.20 | | 63.80 |
| | Haines projects | | 4.80 | | | | 2.00 | 6.80 |
| AKI | Port Armstrong | 85.00 | 30.00 | | 3.00 | 2.00 | | 120.00 |
| BCF | Burro Creek | | | 3.00 | 0.10 | 0.10 | | 3.20 |
| DIPAC | Macaulay | 50.00 | 121.00 | | 1.50 | 0.95 | | 173.45 |
| | Sheep Creek | 10.00 | | | 0.15 | | | 10.15 |
| | Snettisham | | | | | | 33.50 | 33.50 |
| KTHC | Deer Mountain | | | | 0.38 | 0.13 | 0.05 | 0.56 |
| KNFC | Gunnuk Creek | | | 65.00 | 0.25 | | | 65.25 |
| POWHA | Klawock | | | | 5.00 | | 5.00 | 10.05 |
| | Port St Nicholas | | | | | 0.69 | | 0.69 |
| SJC | Sheldon Jackson | 1.00 | 10.00 | | 0.15 | 0.10 | 0.02 | 11.27 |
| Southeast Totals^b | | 146.30 | 450.10 | 68.00 | 31.85 | 18.23 | 43.20 | 757.81 |
| Prince William Sound | | | | | | | | |
| PWSAC | Armin F. Koernig | 190.00 | | | | | | 190.00 |
| | Wally Noerenberg | 93.00 | 165.00 | | 4.00 | 4.00 | | 266.00 |
| | Cannery Creek | 152.00 | | | | | | 152.00 |
| | Main Bay | | | | | | 11.00 | 11.00 |
| | Gulkana | | | | | | 36.75 | 36.75 |
| VFDA | Solomon Gulch | 230.00 | | | 2.00 | 0.30 | | 232.30 |
| Prince William Sound Totals^b | | 665.00 | 165.00 | 0 | 6.00 | 4.30 | 47.75 | 888.05 |
| Cook Inlet | | | | | | | | |
| PGHC | Port Graham | 110.00 | | | | | 1.35 | 111.35 |
| CIAA | Trail Lakes | | | | 6.00 | 4.00 | 30.00 | 40.00 |
| | Eklutna | | | | 0.16 | | 18.00 | 18.16 |
| | Tutka Bay | 125.00 | | | | | 0.66 | 125.66 |
| Cook Inlet Totals^b | | 235.00 | 0 | 0 | 6.16 | 4.00 | 50.01 | 295.17 |
| Kodiak | | | | | | | | |
| KRAA | Kitoy Bay | 215.00 | 25.00 | | 2.30 | | 0.60 | 242.90 |
| | Pillar Creek | | | | 0.50 | 0.30 | 20.00 | 20.80 |
| Kodiak Totals^b | | 215.00 | 25.00 | 0 | 2.80 | 0.30 | 20.60 | 263.70 |
| Statewide Totals^b | | 1,261.30 | 640.10 | 68.00 | 46.81 | 26.83 | 161.56 | 2,204.73 |

^aCrystal Lake Hatchery is a state-owned facility under partial contract to SSRAA; it does not have a PNP permit.

^bSome figures may not total exactly due to rounding.